

**Learn Achieve Aspire**

# Secondary Schools in Camden 2026



Camden schools:  
**Bright** futures



**Applying for a secondary school  
place for September 2026**



Closing date for applications is 31 October 2025



# Contents

---

<b>1</b>	<b>Welcome</b>
<b>4</b>	<b>Camden secondary schools and their locations</b>
<b>5</b>	<b>Open events 2025 and key dates 2025/26</b>
<b>7</b>	<b>Applying online</b>
<b>8</b>	<b>Applying for a secondary school place</b>
<b>11</b>	<b>Guidance on completing the application form including:</b> address, fraudulent applications, medical and social reasons and supplementary forms
<b>12</b>	<b>Secondary admissions for students with special educational needs</b>
<b>12</b>	<b>In-year admissions, Camden's fair access protocol</b>
<b>13</b>	<b>Myth-busters</b>
<b>14</b>	<b>Admissions criteria</b>
14	Community schools
17	Camden School for Girls
18	La Sainte Union Catholic School
19	Maria Fidelis School FCJ
20	William Ellis School and UCL Academy
21	Post-16 in Camden and LaSWAP Sixth Form admissions criteria

---

<b>22</b>	<b>Camden secondary schools</b>
22	Acland Burghley School
25	Camden School for Girls
28	Hampstead School
31	Haverstock School
34	La Sainte Union Catholic School
37	Maria Fidelis School FCJ
40	Parliament Hill School
43	Regent High School
46	UCL Academy
49	William Ellis School

---

<b>52</b>	<b>Allocation of places in 2024 and 2025</b>
<b>53</b>	<b>Other local authority contact details</b>
<b>54</b>	<b>Frequently asked questions</b>
<b>56</b>	<b>List of educational terms and 14–19 education</b>

# Camden schools – bright futures



**Camden schools:**  
**Bright futures**

Dear parents and carers,

We are proud of Camden's secondary schools, which are high achieving and ambitious for all students. Like Camden itself, our schools are vibrant and diverse, offering a tremendous range of opportunities to help prepare their students for successful futures. We believe there is nowhere else in London where young people can receive such an excellent, individual education, with a curriculum and approach which is creative, diverse and inclusive.

This is because each of our secondary schools offers a unique combination of high quality teaching, a prime location in the heart of London and valuable partnerships with world-class businesses, academic institutions and cultural organisations.

This booklet gives you an overview of Camden's secondary schools, highlighting the excellent education they offer and their unique individual strengths. It also gives you an introduction to the superb range of extracurricular activities on offer across Camden that will help your child to learn, achieve and aspire.

The booklet is primarily aimed at families of children transferring from primary to secondary school in September 2026 and it explains how to apply. There is also information for those considering a transfer between schools, as well as details on each of our secondary schools on pages 22 to 51.



**Tim Aldridge**  
Executive Director,  
Children and Learning,  
Camden Council



**Councillor Marcus Boyland**  
Cabinet Member for Best Start for  
Children and Families,  
Camden Council

Apply online: [camden.gov.uk/admissions](https://camden.gov.uk/admissions)

Secondary Schools in Camden 2026 | 1

# Camden schools – bright futures

We are proud of the education we offer in Camden.

- Camden secondary schools are high achieving and ambitious for all students, while all of our schools have 'good' or 'outstanding' Ofsted outcomes
- Camden Borough GCSE results continued to be above the national average in 2024
- All of our schools offer the full National Curriculum plus other areas of study
- Every Camden school offers a supportive approach to pupil wellbeing, including pastoral teams to ensure that children feel safe, happy and ready to learn
- Our secondary schools are committed to creative and vocational learning, with our unique Camden STEAM offer (science, technology, engineering, arts and maths).

**Turn to page 3 for more information about the unique opportunities available to all Camden students. As well as reading this guide, we recommend that you:**

- Contact the schools for their prospectuses or look at their websites, and visit them on their open days and evenings (dates and times, page 5). You will be able to meet the headteacher, speak to members of staff and students and get a feel for the school's working environment and ethos
- Come to a Meet the Parents forum – see [www.meettheparents.info](http://www.meettheparents.info) for details
- Talk to your child's primary school headteacher
- Plan a possible journey to school at [tfl.gov.uk](http://tfl.gov.uk)
- Visit [www.gov.uk/dfe](http://www.gov.uk/dfe) (click 'school and college performance data' link)
- Go to [ofsted.gov.uk](http://ofsted.gov.uk) for the latest Ofsted reports
- Visit [parentview.ofsted.gov.uk](http://parentview.ofsted.gov.uk) to see how other parents rate the school.
- Each Camden school has produced a school report to give a rounded and fuller picture of the school. Visit [camden.schoolreport.org.uk](http://camden.schoolreport.org.uk) - and see pages 22 to 51 for QR codes linking to each school's Camden School Report.

Camden secondary schools have strong links with our excellent primary schools, recognised by Ofsted as among the best in the country overall. As part of this relationship, they will be visiting primary pupils and parents in the autumn term and your child's headteacher will have more details of these sessions.

If you do not live in the borough but would like your child to attend a Camden school, please contact your home local authority's admissions team for details of the admissions process.

Camden school places are popular so please make sure your application is completed properly and on time. The deadline to apply for places for September next year is **31 October 2025**. If you have any questions, please contact your child's primary headteacher or the council's admissions team by emailing [admissions@camden.gov.uk](mailto:admissions@camden.gov.uk). You can also call them on **020 7974 1625** or visit our website at [camden.gov.uk/admissions](http://camden.gov.uk/admissions).

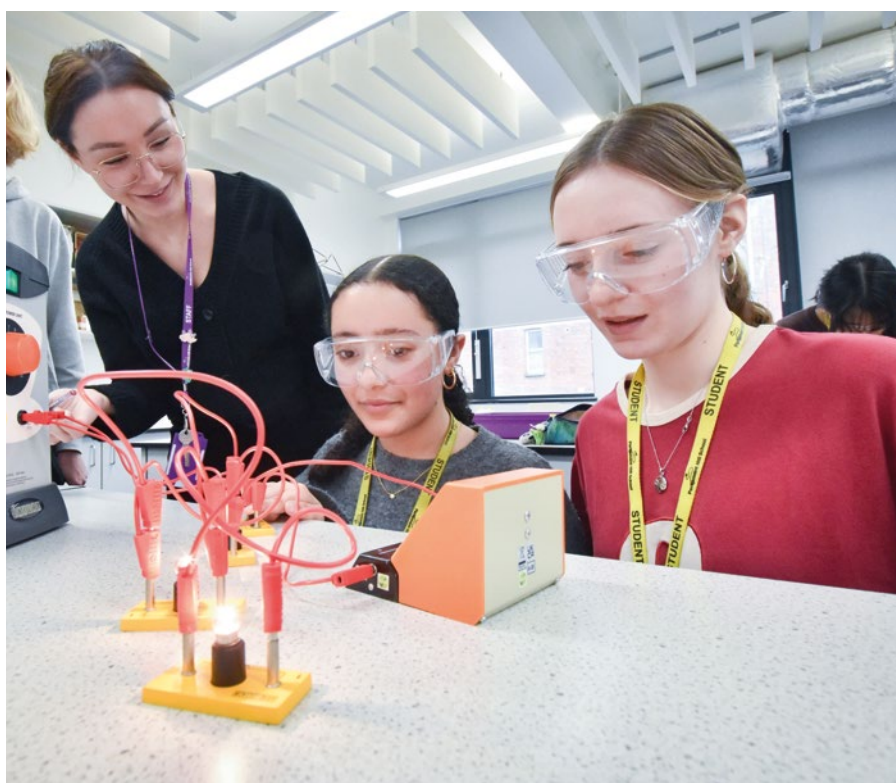
We are confident that whichever Camden secondary school you decide is best for your child you will be delighted with the progress they make, the opportunities they enjoy, the quality of education they receive and the successes they achieve.

## Building Back Stronger - Camden's Education Strategy to 2030

We have seized a once-in-a-generation opportunity to refresh our ambitions for our education system in Camden, based on the twin pillars of equity and excellence.

We believe that a system which is better for disadvantaged children is better for everyone.

We're determined to create a more inclusive education system, which will remove the barriers limiting participation and achievement, respect diverse needs, abilities and characteristics and eliminate discrimination.



# Camden secondary schools – learn, achieve, aspire

**Camden has 10 secondary schools, all individual in their ethos and values but each committed to providing the highest standards of education for young people.**

The borough offers three types of schools: community, voluntary aided schools – including two Roman Catholic schools – and an academy. We have four single sex schools – including three girls' schools and one boys' school – and six mixed-sex schools.

Each of the Camden secondary schools also offer excellent Sixth Form provision, to give young people the best possible preparation for university, apprenticeships or work. More details can be found throughout this booklet and on page 21.

Some of our schools are oversubscribed so it is important that you use as many of your six preferences as possible.

Please see the schools' pages for detailed information on each of our schools (pages 22 to 51), including QR codes linking to their Camden School Reports ([camden.schoolreport.org.uk](https://camden.schoolreport.org.uk)).

More information about each school – including exam results, Ofsted reports, dress code or uniform costs – is available from the individual schools and the DfE and Ofsted websites ([gov.uk/dfe](https://gov.uk/dfe) and [ofsted.gov.uk](https://ofsted.gov.uk)).

For information about schools in other boroughs, please contact the relevant local authority for their secondary transfer booklet or the school directly. The contact details of other local authorities are on page 53.



## **Camden – a borough of unique opportunities for all students**

- The partnership between Camden's Sixth Forms and Cambridge University helps boost student entries to top universities
- Strengthened links with local prestigious universities and many other local world-class institutions, including Central Saint Martins, University of the Arts London, the British Museum, the British Library and the Francis Crick Institute, enriches the education provision for Camden secondary students
- Excellent range of arts, sports, other extracurricular and career-related opportunities, including the Duke of Edinburgh's Award and exciting work placements with leading central London companies
- A Google-supported AI campus has opened for Camden students. Visit [camdenlearning.org.uk/partners-projects/london-ai-campus](https://camdenlearning.org.uk/partners-projects/london-ai-campus)

- Camden Music organises instrumental and vocal tuition in most Camden schools plus borough ensembles, choirs, two Saturday music centres and an instrument hire and purchase scheme for parents. Visit [camdenmusic.org](https://camdenmusic.org)
- Spectacular Camden Schools Music Festival held at the Royal Albert Hall every two years, with the next one taking place in 2027 (see photo above)
- Camden Schools Art Biennale Exhibition at Central Saint Martins, University of the Arts London, Granary Square. Due to be held again in July 2026.

The Camden Future Talent team promotes the best vocational and technical training opportunities for 14 to 19 year-olds, in close partnership with schools, the local Capital City College further education college and specialist training organisations, as well as offering, supporting and promoting a wide range of internships and work experience opportunities – see [goodwork.camden.gov.uk](https://goodwork.camden.gov.uk) for more details.

# School locations



School name	Map ref	School type	Gender	2026 published admission number
Acland Burghley School	1	Community	Mixed	182 <sup>1</sup>
Camden School for Girls	2	Voluntary Aided	Girls	120
Hampstead School	3	Community	Mixed	210
Haverstock School	4	Community	Mixed	139 <sup>3</sup>
La Sainte Union Catholic	5	RC Voluntary Aided	Girls	120
Maria Fidelis School FCJ	6	RC Voluntary Aided	Mixed	150
Parliament Hill School	7	Community	Girls	180
Regent High School	8	Community	Mixed	180
UCL Academy	9	Academy	Mixed	192 <sup>2</sup>
William Ellis School	10	Voluntary Aided	Boys	112

<sup>1</sup> Including 4 places in resource base for students with autism    <sup>2</sup> Including 18 places for students with an aptitude for visual arts

<sup>3</sup> Including 4 resource places for students with autism

--- Camden borough boundary

# Open events 2025

All Camden secondary schools plan to have open events for parents and the details below were correct at the time of going to print – please check the schools' and Camden Council's website for the most up to date information.

## Acland Burghley School

Burghley Road, London NW5 1UJ 020 7485 8515  
[www.aclandburghley.camden.sch.uk](http://www.aclandburghley.camden.sch.uk)



**Open evening:** Wednesday 24 September, 5 to 7pm  
**Open mornings:** 23, 24 and 25 September, 9 to 10.30am  
**Sixth Form:** Thursday 27 November, 4.30 to 7pm at William Ellis and Parliament Hill Schools (pre-registration is required – see the school website or [www.laswap.camden.sch.uk](http://www.laswap.camden.sch.uk))

## Hampstead School

Westbere Road, London NW2 3RT  
020 7794 8133  
[www.hampsteadschool.org.uk](http://www.hampsteadschool.org.uk)



**Open evening:** Tuesday 7 October, 4.30pm  
**Open mornings:** 30 September and 1, 7, 14, 15 October, 9.15am  
**Sixth Form:** Tuesday 21 October, 4.30pm

## The UCL Academy

Adelaide Road, London NW3 3AQ 020 7449 3080  
[www.uclacademy.co.uk](http://www.uclacademy.co.uk)



**Open evening:** Thursday 2 October, 4.30 to 6.30pm  
**Open mornings:** 11, 16 and 25 September, 9 to 10.30am. Please register via the Academy website  
**Sixth Form:** Thursday 6 November, 4.30 to 6.30pm. Please register via the school website

## Parliament Hill School

Highgate Road, London NW5 1RL  
020 7485 7077  
[www.parliamenthill.camden.sch.uk](http://www.parliamenthill.camden.sch.uk)



**Open evening:** Thursday 25 September, 5 to 7.30pm  
**Open mornings:** 1, 2 and 7 October, 9 to 10.30am  
**Sixth Form:** Thursday 27 November, 4.30 to 7pm at William Ellis and Parliament Hill Schools (pre-registration is required – see the school website or [www.laswap.camden.sch.uk](http://www.laswap.camden.sch.uk))

## La Sainte Union

Highgate Road, London NW5 1RP 020 7428 4600  
[www.lasainteunion.org.uk](http://www.lasainteunion.org.uk)



**Open evening:** Tuesday 30 September, 4 to 7pm  
**Open mornings:** 14 and 16 October, 9 to 11am. Headteacher Coffee Mornings on 22 and 23 October at 9am  
**Sixth Form:** Thursday 27 November, 4.30 to 7pm at William Ellis and Parliament Hill Schools (pre-registration is required – see the school website or [www.laswap.camden.sch.uk](http://www.laswap.camden.sch.uk))

## Camden School for Girls

Sandall Road, London NW5 2DB 020 7485 3414  
[www.csfg.org.uk](http://www.csfg.org.uk)



**Open evening:** Monday 22 September, 5 to 7pm  
**Open mornings:** 17 and 19 September, 9am to 11am  
**Sixth Form:** Tuesday 18 November. Tickets will be available from 1 October. Please check website nearer the time  
**Banding assessment registration:** register online by 23 September, 12 noon

## Haverstock School

24 Haverstock Hill, London NW3 2BQ  
020 7267 0975  
[www.haverstock.camden.sch.uk](http://www.haverstock.camden.sch.uk)



**Open evening:** Wednesday 1 October, 4.30 to 6.30pm  
**Open mornings:** Every Thursday from 25 September to 23 October, from 9 to 10am  
**Sixth Form:** Wednesday 26 November, 4.30 to 6.30pm

## Maria Fidelis School FJC

1–39 Drummond Crescent, London NW1 1LY  
020 7387 3856  
[www.mariafidelis.camden.sch.uk](http://www.mariafidelis.camden.sch.uk)



**Open evening:** Wednesday 24 September, 4 to 6pm  
**Open mornings:** Every Tuesday from 9 to 10am during term time  
**Sixth Form:** Thursday 15 January 2026

## Regent High School

Chalton Street, London NW1 1RX 020 7387 0126  
[www.regenthighschool.org.uk](http://www.regenthighschool.org.uk)



**Open mornings:** 29 September to 3 October and 6 to 10 October starting at 9am  
**Sixth Form:** Thursday 13 November, 4 to 6pm

## William Ellis School

Highgate Road, London NW5 1RN 020 7267 9346  
[www.williamellis.camden.sch.uk](http://www.williamellis.camden.sch.uk)



**Open evening:** Thursday 25 September, 6 to 8pm  
**Meet the Head:** 17 September, 1 October and 15 October, 4 to 5pm  
**Open mornings:** 10 and 24 September, 8 and 22 October, 9 to 10.30am  
**Sixth Form:** Thursday 27 November, 4.30 to 7pm at William Ellis and Parliament Hill Schools (pre-registration is required – see the school website or [www.laswap.camden.sch.uk](http://www.laswap.camden.sch.uk))

Local group **Meet the Parents** will hold informal forums at local primary schools from 15 to 18 September, where families can 'meet the parents' and students who attend their local secondary schools.

Find out more and book your places: [meettheparents.info/latest-events](http://meettheparents.info/latest-events)

# Key dates

## 2025

<b>August</b>	New admissions booklet published online
<b>1 September</b>	Online applications open at <a href="http://www.eadmissions.org.uk">www.eadmissions.org.uk</a>
<b>September/October</b>	Parents and their children visit secondary schools on open days arranged by the individual schools
	Parents discuss preferences with Camden primary school headteachers
<b>Noon on 23 September</b>	Camden School for Girls deadline to register for the banding assessment test and music aptitude assessment
<b>5pm on 30 September</b>	UCL Academy visual arts supplementary form deadline
<b>4pm on 7 October</b>	William Ellis music place application deadline
<b>24 October</b>	Maria Fidelis supplementary information form deadline
<b>27 to 31 October</b>	Half-term *
<b>31 October</b>	<b>Final closing date for applications and changes to preferences</b>
<b>31 October</b>	La Sainte Union deadline for parents to complete online supplementary information form (available on the school's website) and provide a copy of their child's baptismal certificate
<b>19 December</b>	End of autumn term*

## 2026

<b>5 January</b>	First day of spring term
<b>16 to 20 February</b>	Half term*
<b>Monday 2 March</b>	<b>Camden Council informs applicants who live in Camden of the outcome of ALL applications to schools in or outside the borough within the co-ordinated scheme. If you applied online, you will receive an email with the outcome of your application during the evening</b>
<b>16 March</b>	Deadline to accept or decline offer via eadmissions website or reply slip
<b>27 March</b>	Closing date for submitting appeals for Camden community schools. Parents appealing to other local authorities or voluntary aided/foundation schools must check the deadline for submitting appeals with those authorities/schools
<b>30 March to 10 April</b>	Spring holiday*
<b>June to July</b>	Appeal hearings for Camden community schools
<b>September</b>	Children start secondary school

\* Some Camden schools have different term dates. Please check the relevant school website for further information.

# Applying online

From September 2025, parents of children living in Camden can apply online for their child to transfer from Year 6 to secondary school in 2026 at:

[www.eadmissions.org.uk](http://www.eadmissions.org.uk)

This online form is only for children born between 1 September 2014 to 31 August 2015.

**We strongly advise parents to apply for a school place online.** If you have problems with this, please talk to your primary school or email [admissions@camden.gov.uk](mailto:admissions@camden.gov.uk).

## What are the advantages?

- Safe, quick and easy
- Allows you to change your information online rather than using a new form
- You can check and change your application at any point until the closing date
- A drop-down schools list helps to minimise errors and saves you time
- You can print out a paper copy of your application if you need it for reference
- A password protected system gives you guaranteed confidentiality and privacy
- Your forms will not get lost in the post
- You can easily log on at home, work, a café with Wi-Fi or at a library.

**Using the internet at a Camden library is free; prior booking is recommended.**

## What is the deadline?

The deadline for online applications is 11:59pm on **Friday 31 October 2025**.

## How will I know if my online application has been received?

You will be sent an email confirmation and application reference number similar to this:

**202-2026-09-E-001234**

Please keep your reference number and login details safe, by writing them in the box below.

## When will I know the outcome of my online application?

During the evening of **Monday 2 March 2026**, you will be sent an email with the outcome of your application. For those parents or guardians who have not applied online, a letter with the outcome of your application will be posted by first class mail on **2 March 2026**.

### For online admissions

USER NAME/EMAIL:

PASSWORD:

REFERENCE NUMBER:



# Applying for a secondary school place

## How does the admissions system work?

The pan-London co-ordinated admissions scheme was developed by all London boroughs, together with six councils which border the capital, to improve the way that secondary transfer is administered, and to make the process fairer and simpler. The co-ordinated system has allowed more parents to receive an offer at one of their preferred schools and resulted in fewer parents with no offer at all. Please note that although designed to be a fairer system, there is no guarantee that you will be offered a place at one of the schools you apply for.

Wherever you live, you may apply for a place at a state school in any London borough or other area. Most people apply online (see page 7) but if you are not doing so you must apply to the borough you live in. You can express preferences for schools in other London boroughs via the eadmissions online system. When applying to a school in another borough, you must check the admission arrangements with the appropriate school or local authority admissions team.

Please note that private (independent) schools are not included in these arrangements. Therefore, applications for private schools must be made directly to the school.

## Who can apply?

Children transferring from primary to secondary school in September 2026 can apply if they are born between 1 September 2014 and 31 August 2015, and currently in Year 6. If your child is in the last year of primary school, but their birthday does not fall between these dates, please contact the Camden admissions team by emailing [admissions@camden.gov.uk](mailto:admissions@camden.gov.uk) or calling 020 7974 1625.

## How do I apply?

We strongly recommend parents apply online (see page 7). If you are unable to do so please talk to your primary school or email [admissions@camden.gov.uk](mailto:admissions@camden.gov.uk).

Your application must be made to the local authority where your family are residing by **Friday 31 October 2025**.

You can name up to six schools that must be listed in your preference order on the application. We strongly advise parents to use all six preferences to increase their chance of being offered a school of their choice. If only one school is listed, it does not increase your chances of being offered a place at that school.

Schools will not be told your order of preference, or details of other schools you have listed on your application.

## What to consider when making an application

Be realistic about the chances of your application being successful and consider the following to increase your chances of being offered a school of your choice:

- Look carefully at the published admissions criteria for any oversubscribed school
- The admissions criteria for Camden community schools is set by Camden Council (pages 14 to 16)
- The admissions criteria for voluntary aided schools and UCL Academy are decided by their governing bodies (pages 17 to 20)
- Think carefully about your preference order – if eligible to be offered a place at more than one school, your child will be offered their highest preference school, if a place is available there – all lower preferences will be released

- Your child's name will automatically be placed on a waiting list for any higher preference school(s) than the school offered.

## What is the distance admissions criteria?

There are no catchment areas for Camden community secondary schools and none have feeder primary schools. So, just because your child attends a particular primary school, it does not mean that he or she will automatically be given a place at a particular secondary school.

Most families when applying for an oversubscribed Camden community secondary school will be considered under the distance criteria if there are no special factors or siblings at those schools.

Find out more about the distance criterion:

- See the flow chart on page 16, which will help you decide whether your application will be considered under the distance criterion
- Our website at [schoolsearch.camden.gov.uk/schools](https://schoolsearch.camden.gov.uk/schools) will help you find your nearest secondary schools and the approximate distances from your home
- The table on page 52 will help you compare your distance from a school with those of students who were offered a place in previous years. These distances are for guidance only and can change each year.

## How are places allocated?

The pan-London co-ordinated admissions scheme electronically exchanges information about Camden applicants who apply for schools outside this borough and parents living outside this borough who list Camden schools among their preferences.

The admissions authority for each school will consider all applications for their school at the same time. If a school receives more applications than places available, then the admissions authority for that school will assess each applicant under its published admission criteria to determine which students will be offered places.

**Think carefully about your preference order** (see 'what to consider when making an application', page 8).

## When will I know?

Parents who apply online will receive an email during the evening of **Monday 2 March 2026** with the outcome of their application. Letters will be posted by first class mail on **Monday 2 March 2026** to parents who submit a paper application. If you do not receive notification, please contact the Camden admissions team on **020 7974 1625** as soon as possible or email [admissions@camden.gov.uk](mailto:admissions@camden.gov.uk).

Parents will be asked to respond via the eadmissions system or post to confirm whether they accept or decline their offer by **Monday 16 March 2026**. If parents do not respond, it could result in the offer being withdrawn and the place being offered to the next child on the waiting list. Similarly, if a place is offered and accepted but the child does not start school within two weeks following the start of term, the place may be offered to another child.



## What if my application is late or I change my preferences?

Changes to preferences and the order of the preferences will only be accepted up until the closing date of **Friday 31 October 2025**. Changes to preferences after this date will not be considered until after the offer day on **Monday 2 March 2026**, which means that there may not be places remaining at your preferred school. Applications received after the closing date of **Friday 31 October 2025** will only be considered if there are exceptional reasons why the applicant could not apply on time.

Reasons for late applications must be included in writing with the application, enclosing any appropriate supporting information. Late applications will be agreed at the discretion of the Head of Education Commissioning and School Organisation.

## Waiting lists

Your child's name will automatically be placed on a waiting list for any higher preference school(s) than the school offered. Your child's name will not be placed on any waiting list for a lower preference where he or she has been offered a place at a higher preference school.

Waiting lists are not operated on a first come first served basis. Your place on the waiting list, and whether a place is offered if another child drops out, is determined by the school's admissions criteria. The waiting list does not take account of the parents' order of preference because 'preference' is not part of the admission criteria.

Waiting lists are revised every time relevant factors relating to any applicant changes and it is possible for applicants to go down as well as up the list. A place on the waiting list is not a guarantee of a place in the school. Equally, the length of time spent on a waiting list does not affect your place on the list.

All late applications are placed on the waiting list at the appropriate place once offers have been made on **Monday 2 March 2026**.

# Applying for a secondary school place (continued)

## Does it matter what order I list my school preferences?

**Example 1:** A parent ranks a local school as their highest preference and is offered a place there. The child will not be put on the waiting list for any of the other schools in the co-ordinated scheme that were ranked lower by the parent, as they were offered their highest possible preference.

**Example 2:** A parent names three preferences on their application and ranks them in the following order:

1. School A
2. School B
3. School C

The parent is offered School B. The child's name will remain on School A's waiting list, as this preference was higher than the offered school but will not be put on School C's waiting list, as this school was listed lower than the offered school.

## What happens if my child does not have a school place?

If you are not offered a place at any of your preferred schools, the Camden admissions team will attempt to offer you the nearest Camden school that has a vacancy. Please contact the Camden admissions team (email: [admissions@camden.gov.uk](mailto:admissions@camden.gov.uk); tel: 020 7974 1625) for information about schools which may have vacancies, or short waiting lists and you will be invited to make applications to these schools as soon as possible.

Parents have a legal duty to ensure their children receive full-time education suitable to their age, ability or aptitude. In addition, Camden Council has a legal duty to ensure that all children living within the borough have a secondary school place.

At the beginning of the autumn term the Camden admissions team will pass the names of all the children without a school place to the school inclusion team who will work with parents to ensure their child is receiving an education.

## Can I appeal if I don't get the place I want?

You may appeal for a place at any of your preference schools at which you have been refused a place. However, you should accept the place you have been offered, or secure a place at an alternative school with vacancies to ensure you have a place for your child if your appeal is unsuccessful. It is sensible to do this because secondary transfer appeals are normally heard during the second half of the summer term, by which time there will be very few alternative schools with vacancies. Doing this will not affect your right to appeal and, if the appeal committee upholds your appeal, you can then withdraw from the alternative school. The Camden admissions team (email: [admissions@camden.gov.uk](mailto:admissions@camden.gov.uk); tel: 020 7974 1625) will always discuss alternative schools with vacancies at any stage in the process.

For a voluntary aided school within or outside Camden, the school is responsible for appeal arrangements and you should contact them directly for details. For a community school, the local authority in which the school is located is responsible. If you want to appeal for a Camden community school, UCL Academy or William Ellis School, you can use the online form at [camden.gov.uk/schoolappeal](https://camden.gov.uk/schoolappeal).

Appeal forms should be submitted online via [camden.gov.uk/schoolappeal](https://camden.gov.uk/schoolappeal) to committee services by **27 March 2026**. Appeals submitted after the closing date will be accepted, but there is no guarantee the appeal will be heard before the end of the academic year. For further information on appeals you can contact: Education admissions appeals co-ordinator, Committee Services, Camden Town Hall, Judd Street, WC1H 9JE. Telephone: 020 7974 1914.

Appeals are heard by an independent committee. A decision by an appeal committee whether or not to offer a school place is binding on the admissions authority. If an appeal is successful the school must offer a place to the child concerned. This means that the number of children to be admitted to the school will exceed the published admission number and no further places will be offered until the number of children falls below the school's published admission number. If your appeal for a school is unsuccessful, you may not appeal for the same school within one academic year, unless there has been a material change in circumstances.

Appeal hearings for places at Camden community schools will normally be held in June/July 2026 for secondary transfer. In 2025, twelve community school appeals were held (four for Parliament Hill and eight for Acland Burghley). None of the appeals were successful. If you require appeal information about a Camden voluntary aided school or an academy, please contact the relevant school.

## Where can I get help?

If you have any queries regarding these arrangements:

- Please contact Camden admissions team by emailing [admissions@camden.gov.uk](mailto:admissions@camden.gov.uk) or calling **020 7974 1625**
- Visit in person (please make an appointment): 5 Pancras Square, London N1C 4AG (note: please do not send post here)
- Write to: School admissions team, Camden Town Hall, Judd Street, London WC1H 9JE
- For information on schools in other boroughs, you will need to contact the relevant school or local authority directly. See page 53 for other local authority contact details.

# Guidance on completing the application form

## Parental responsibility

Applications should be submitted by those with parental responsibility or legal guardianship. If you have any queries about parental responsibility please contact the admission team on 020 7974 1625.

## Proof of date of birth

You need to submit proof of your child's date of birth - for example, their NHS medical card or short birth certificate.

## Proof of address

You will need to submit a utility bill (gas, electricity or water bill) dated in the last three months and your current Council Tax statement as proof of your address. Camden will also verify the address on your application form using existing council records and credit reference agencies. If your address cannot be verified, Camden admissions team will contact you requesting further evidence, such as a housing benefit letter or tenancy agreement. Failure to produce such evidence may lead to the offer of a place being withdrawn, even if the place has already been accepted. Voluntary aided schools may also request further evidence of address. The address given must be the address where those with parental responsibility or legal guardianship reside with the child, and from where the child goes to school.

The most common reason for the council to request further evidence is because the name of the applicant does not match the name of the person recorded as being at this address. Sometimes this is because people use their maiden name rather than their married name, or spell their name in a different way to usual. Please use the spelling of your name as it appears on official records such as your council tax bill.

## Children living at two addresses

Applications can only be based upon one address at which the child usually lives and from where they travel to and from school.

If parents live separately, the application must be based on the address at which the child spends the majority of the school week.

If the child lives equally at two different addresses, it is the parents' responsibility to agree and make it clear which address will be used and to provide supporting evidence in respect of that address. If parents are unable to decide which address will be used for the application the local authority will make the decision.

Once a decision has been made as to which address will be used, for parents who live separately, this will not be amended until the start of the next academic year. If there is a significant change in circumstances, parent/s will need to submit a written case to the admissions team for consideration.

## Change of address

Please notify the Camden admissions team immediately if you change your address. We can only accept changes of address once they have taken place. Notice of planned future arrangements will not be accepted under any circumstances. An application will only be considered on the basis of your child's permanent home address at the closing date of **Friday 31 October 2025**.

A change of address will only be taken into account if it occurs before the closing date of **Friday 31 October 2025**.

If you move before **Friday 31 October 2025**, and you notify Camden admissions team in writing with appropriate evidence by this date, your application will be considered on the basis of the new address.

If you move, or inform the Camden admissions team after **Friday 31 October 2025**, the change of address cannot be taken into account when considering your application and your address will not be amended until after **Monday 2 March 2026**. If you move address after **Friday 31 October 2025** and are offered a place based on your previous address you will be entitled to retain that place if you wish.

If you move in or out of Camden after **Friday 31 October 2025** and have completed an application in your previous borough, you will need to contact both councils with details of your new address.

## Temporary accommodation

Camden will not accept a temporary address if you still possess a property that was previously used as a home address, or a temporary address used solely or mainly to obtain a school place.

We consider temporary accommodation a place where you have lived for a year or less prior to the closing date of **Friday 31 October 2025** (including rented, bought or living with a family member or friend). We will also review the application of any family who decides to move after taking up the school place up to a year following the closing date.

You will be asked to provide additional information to explain why you are not using your permanent address, or another address identified as a result of our screening, or as a result of information obtained from the public. Requests for additional information may include utility bills, bank statements, benefit claims and copies of mortgage or rent agreements. We will also use council records to check if you receive services or benefits at another address.

## Fraudulent applications

- Camden Council takes very seriously any attempt to obtain a school place through fraudulent activity
- All cases are investigated and the use of credit reference agencies has improved detection rates
- If you know someone who intends or has used a false address to get a school place, you can report this confidentially to the Camden admissions team by emailing [admissions@camden.gov.uk](mailto:admissions@camden.gov.uk). You do not need to give your name but please provide as much information as possible so that we can investigate the matter fully
- Fraudulent applications will result in the school place being withdrawn, even after the child has started school, and may be referred to the council's legal department for their consideration and possible action.

# Guidance on completing the application form (continued)

## Exceptional medical or social reason for attending a particular school

Where a parent states a preference for a particular school because of the exceptional medical or social needs of their child, they must demonstrate how this school meets the child's special circumstances. Along with your application, you should submit supporting evidence which sets out the particular reasons why the school is the most suitable and the difficulties that could be caused if your child has to attend another school. This will normally be a letter from a suitably qualified professional, such as a doctor, consultant or social worker.

Please read the school's oversubscription criteria for further information on how the criterion will be applied and see note 2 on page 14 for further details. For a copy of our exceptional medical and social policy please contact the Camden admissions team email: [admissions@camden.gov.uk](mailto:admissions@camden.gov.uk); tel: **020 7974 1625**. If you do not submit any supporting information, then your application will be considered under the distance criterion.

## Supplementary forms

Camden's voluntary aided schools may require a supplementary form to be completed. These requirements are listed below. You need to contact the schools directly for these forms and return them to the school by the specified date (see key dates on page 6).

**If you do not submit your supplementary form, or it is incomplete, then you will be considered under the distance criterion.**

- **Camden School for Girls** – all applicants must register online, via the Camden School for Girls website, for the banding assessment
- **La Sainte Union** – supplementary form required from all applicants
- **Maria Fidelis** – supplementary form required from all applicants
- **UCL** – supplementary form required for visual arts places

- **William Ellis** – online supplementary form required for music applicants only; available at the open events or on the school website: [williamellis.camden.sch.uk/admissions](http://williamellis.camden.sch.uk/admissions).

## Secondary admissions for students with an EHC Plan or undergoing statutory assessment

The secondary transfer process is different for children with an education, health and care (EHC) plan (see [camden.gov.uk/sen](http://camden.gov.uk/sen)). You can still make use of this booklet to gain general information about Camden secondary schools. However, you should not apply through the ordinary secondary transfer process, but be guided by the SEN team of the local authority that maintains your child's EHC plan. In the case of Camden residents, the Camden SEN team will contact each family either directly or via their primary school in the summer of Year 5. If your child is being assessed for an EHC plan please apply through the mainstream process. If an EHC plan is issued and a different school agreed, you can withdraw the mainstream application.

The SEN team of the local authority that is carrying out the assessment will be able to advise you further if you have any questions. Your allocated case officer will provide you with a phase transfer information pack, which will include the Primary to Secondary School Transition Guide by Camden Learning, SENDIASS checklists for visiting secondary schools, Camden Council's phase transfer presentation and a parental preference form. This will be emailed to you. If you wish to receive a paper copy you can request this directly from your allocated case officer. This is mailed out to all families along with a preference form. A copy can be obtained from your child's school, or from the Camden SEN team on **020 7974 6500**. For more information about the range of support and services available, including home to school transport for children with special educational needs in Camden please visit:

- [camden.gov.uk/sen](http://camden.gov.uk/sen)
- [families.camden.gov.uk/send-local-offer](http://families.camden.gov.uk/send-local-offer)

Apply online: [camden.gov.uk/admissions](http://camden.gov.uk/admissions)

## In-year admissions to secondary school

Admissions to Camden schools for all years, apart from Year 7 starting in September 2026, are dealt with by the schools. Please contact the relevant school for any queries regarding in-year admissions. Please also ask the school for their application form and any supplementary form required for a faith school. The school will apply the published admissions criteria if the appropriate year group is oversubscribed. If you are a parent who lives in another borough, you can contact the relevant Camden school and apply directly to the school. If you are thinking of transferring your child from one Camden school to another, you are strongly encouraged to discuss the matter with your child's current class teacher, head of year or headteacher before taking any further action. It is sometimes the case that children can take a while to settle into their new school and asking the school for further help could resolve any difficulties your child may be experiencing.

## Educated out of normal age group

If your child is currently educated out of his/her normal age group, you can request that this continues, and your child remains in their current year group. Each secondary school will decide separately whether or not your child remains out of the normal cohort for their age group. If a secondary school does not agree with your request, your child's application will be considered in the year group according to your child's date of birth.

## Camden's fair access protocol

This is run by a partnership of our secondary schools and involves a panel, which can allocate school places above the published admissions number for young people from high priority groups – such as those who have been permanently excluded or out of education for a long time. A copy of the protocol is available on request by emailing [sit@camden.gov.uk](mailto:sit@camden.gov.uk).

# Myth-busters

**Some parents or carers make decisions based on incorrect information they have heard. Here are some of the common myths we have encountered.**

**Myth – Listing one school on your form will mean that the council will have to offer that school.**

If we apply the admissions arrangements and your child cannot be offered a place because you live too far away, we will not be able to offer a place at the school. Listing only one school on your application does not increase your chances of gaining a place at that school.

**Myth – If you live nearer to the school than the last child offered under the distance criterion last year you will be guaranteed a place.**

Although the information on page 52 can give you an idea of how likely it is that you will be offered a place at your preferred school, the 'furthest distance' will change every year. We can never guarantee any child will be offered a place at any school.

**Myth – Children living on my road go to the school so my child will too.**

The number of pupils offered under each criterion at each school can change every year so just because you know pupils living near you that go to a certain school, it does not mean that your child will be offered a place there.

**Myth – If I work close to the school, the distance is from my work to the school.**

The proximity of your workplace has no bearing on your application – we will measure your distance from your home to the school.

**Myth – If I have a sibling enrolled at a faith school I will get higher priority.**

This may not always be the case, as some faith schools rank regular worship at a particular church above siblings. Please check the admissions criteria for your selected faith school.

**Myth – My child's Key Stage 2 test results will affect their chance of securing a school place.**

The Key Stage 2 test results do not form part of the admissions criteria for any of Camden's community, voluntary aided schools, or UCL Academy, so your child's results will not be considered.

**Myth – The oversubscription criteria never changes.**

Each year the council consults on the admissions criteria for the community schools and the oversubscription criteria can vary from year to year.

**Myth – I can only apply for Camden schools.**

You can apply for both Camden and out of borough schools by listing them on your application. If applying for a voluntary aided school, you should check with the school to see if they require a supplementary form to be completed as well.

**Myth – If I apply to a school in another borough, their residents will have priority over me.**

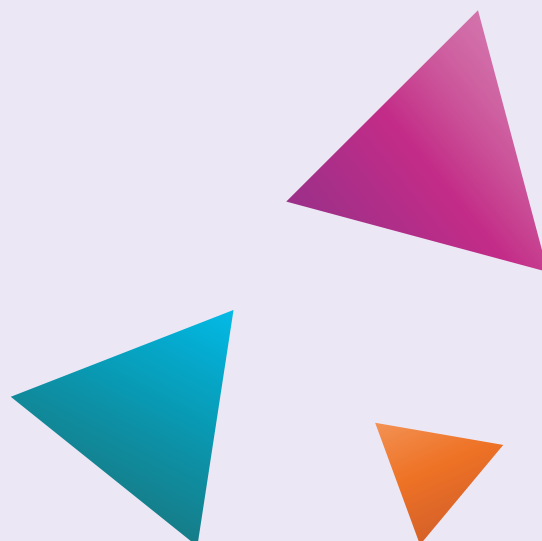
A council cannot give preference to its own residents and published admissions criteria cannot include the borough of residence. Camden cannot and does not discriminate between applicants who live in the borough and those who do not. However, we do advise checking the admissions criteria with the appropriate authority if applying to a school in another borough.

**Myth – It does not matter if my application is late.**

If you apply after **Friday 31 October 2025** your application will not be considered until after all those who have applied on time and it is very unlikely that you will be offered one of your preferred schools.

**Myth – My school place cannot be withdrawn once it has been offered to me.**

Once the council has made an offer of a school place, it can only be lawfully withdrawn in very limited circumstances. This may happen where an application is found to be fraudulent or a parent has not responded to an offer within the specified timescale.



# Admissions criteria for community schools

- **Acland Burghley School**
- **Hampstead School**
- **Haverstock School**
- **Parliament Hill School**
- **Regent High School**

These admissions criteria apply to Camden's five community schools when there are more applications than places available.

## Admissions criteria

**1.** Looked-after children or children who were previously looked-after but immediately after being looked-after became subject to an adoption, child arrangement or special guardianship order. This also includes previously looked after children who were in state care outside of England and ceased to be in state care as a result of being adopted. **See note 1.**

**2.** Applicants who have a sibling on roll at the same school who will still be on roll when they join and are living at the same address. Only siblings in Years 7 to 10 and Year 12 can be considered as siblings for secondary transfer applications. Siblings in Year 11 cannot be considered under this criterion, until they receive their GCSE results and fulfil the entry requirement for Sixth Form. Sibling refers to a brother or sister, half brother or sister, adopted brother or sister, step brother or sister, or the child of the parent or partner where the child for whom the place is sought is living in the same family unit, at the same address, as the sibling.

**3.** Applicants whom the council accepts have an exceptional medical or social need for a place at the school. The local authority will also accept recommendations from the SEN exceptional needs panel for an applicant whose needs support a place at a particular school. **See note 2.**

**4.** Children whose parent is a qualified teacher or teaching assistant, teaching at the relevant school for two years or more at the time of application and / or children of a qualified teacher, teaching at the relevant school who has been recruited to fill a vacancy for which there is a demonstrable skills shortage.

**5.** Applicants who live closest to the preferred school. Proximity to a school is measured on a computerised mapping system, measured in a straight line 'as the crow flies' between the property address to the centre of the school. **See note 3.** This criterion will be used as a 'tie breaker' for the first four criteria.

In the case of applicants to **Regent High School** only, priority will be given to applicants within the priority zone of Holborn and Covent Garden ward, even if they are further away within the distance criterion.

**Equal preference model** – will be used to decide which school is offered. This means that all school preferences are considered together and the admissions criteria administered for each school preference at the same time. The rank or order of preference will only be used if it is possible to offer more than one of the preferences. The highest ranked potential offer will be offered and the lower preferences will be automatically withdrawn.

The flow chart on page 16 provides useful guidance on how the council's criteria are used to decide which applicants are offered the available places at Camden community schools.

## Notes

**1.** In order to be given highest priority for admission, a child has to fall within the definition of 'looked-after' in section 22 (1) of the Children Act 1989.

Paragraph 1.7 of the School Admissions Code gives equal highest priority to 'previously looked-after children'. Previously looked after children are children who were looked after but ceased to be so because they were adopted or became subject to a child arrangements order or special guardianship order. This will also include those children, in the opinion of the local authority, who have been in state care outside of England and ceased to be in state care as a result of being adopted. A child is regarded as having been in state care outside of England if they were in the care of or were accommodated by a public authority, a religious organisation, or any other provider of care whose sole or main purpose is to benefit society.

Proof of looked-after status from the relevant local authority or organisation must be included with the application.

**2.** Some schools give priority to children with exceptional medical or social needs. To view our exceptional medical and social policy please visit: [camden.gov.uk/admissions](https://camden.gov.uk/admissions).

If you state a preference for a particular school because of medical or social needs, you must explain how this school specifically meets your child's special circumstances better than any other school can. Along with your application, you should submit supporting evidence which sets out the particular reasons why that school is the most suitable, and the difficulties that could be caused if they were to attend another school. This will normally be in the form of a letter from a suitably qualified professional, such as a medical consultant or social worker and must not be more than six months older than the date of applying.

Please note that hospital appointment letters cannot be accepted as proof. If you or your child has mobility issues then you will be expected to accept a place at your nearest community school, if applying under the medical/social criterion.

Each application under this criterion will be considered by the medical/social advisory panel, which includes a consultant paediatrician, senior social worker, educational psychologist, school inclusion and admissions officers.

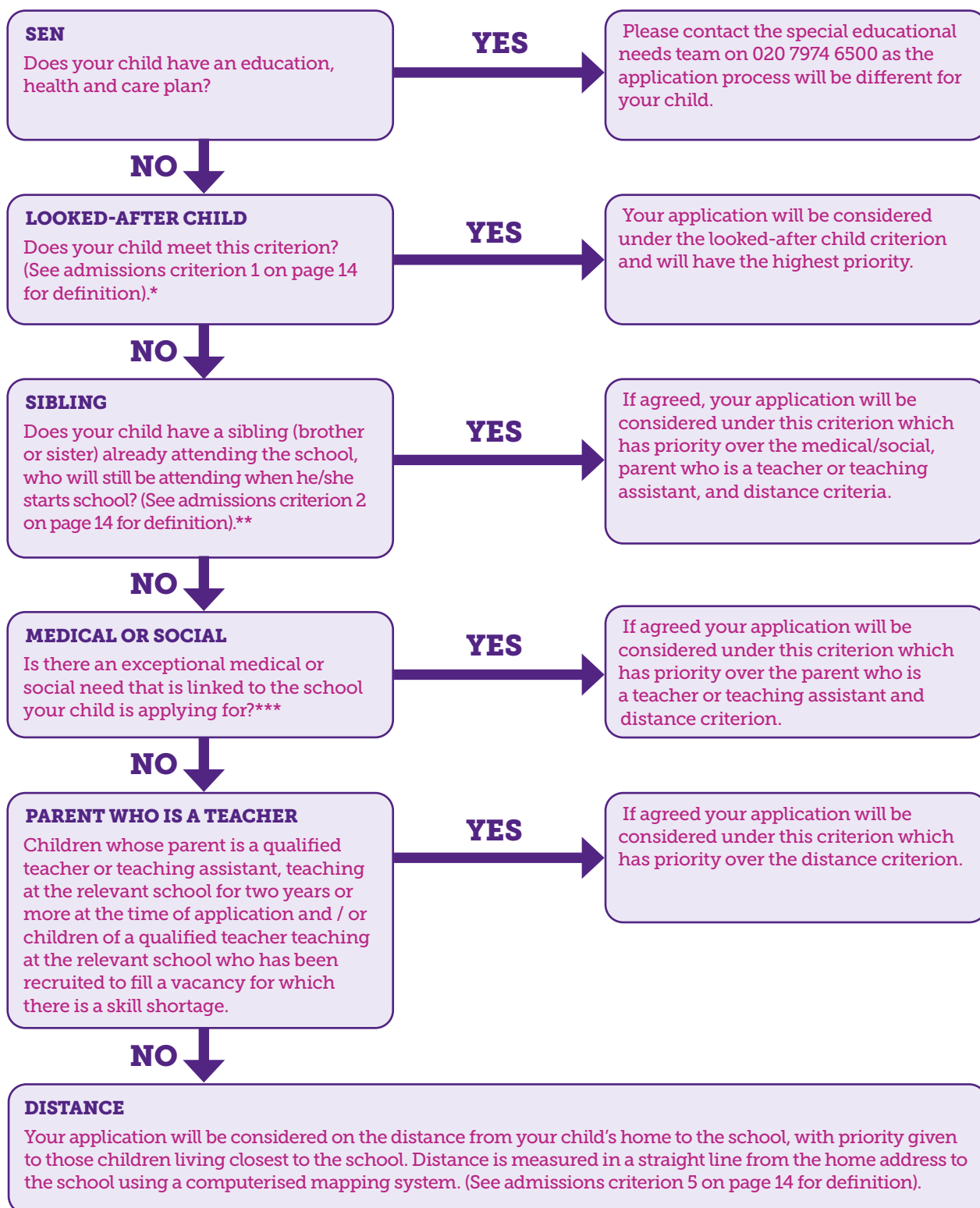
**3.** Any offer of a place on the grounds of proximity is conditional on the child being resident at the address provided at the closing date for applications. A business, childminder's or relative's address cannot be used as the child's home address. The address used must be the address of those with parental responsibility or legal guardianship for the child. Further proof of address may be sought and be the subject of further investigation. Proximity to the school is measured in a straight line 'as the crow flies' between the property address and the centre of the school. The point used to measure from the address is supplied by the local land and property gazetteer. In the minority of cases when applicants distance measurements are exactly the same, in blocks of flats for instance, the computer system will randomly order the priority of applicants.

**4.** Children with an education, health and care plan (see page 12) that specifies the community school as a placement will be allocated a place through a separate procedure, in accordance with the Children and Families Act 2014.

**5.** If there is only one place available at the school and the next child who qualifies for a place is one of multiple birth siblings, we will go over the community schools' published admission number where parents indicate a preference for siblings to be at the same school.



## Admissions criteria for community schools (continued)



\* Proof of looked-after status from the relevant local authority must be included with the application.

\*\* Sibling refers to brother or sister, half brother or sister, adopted brother or sister, step brother or sister and, in every case, the child should be living in the same family unit at the same address. This information will need to be validated by the school in question.

\*\*\* Independent professional evidence must be included with the application.

# Admissions to Camden School for Girls

**Applicants should carefully read the school's complete admissions policy on the school website: [www.csg.school](http://www.csg.school)**

**Application forms and deadline dates are also available on the website.**

## **Year 7 admissions**

The school admits 120 girls representing the full range of ability. Applicants should attend an assessment session at the school, which will place them in one of four ability bands. These non-competitive assessments are processed independently of the school. Thirty places are offered in each band.

The banding assessment sessions will take place on **Wednesday 24 September 2025 and Saturday 27 September 2025**. Applicants must register online for the banding assessment by **Tuesday 23 September 2025 at 12 noon**. Music applicants should follow the instructions at the end of the banding assessment registration. Parents will be informed by email of the banding assessment result on or before **Friday 31 October 2025**.

Places will first be offered to applicants naming the school who have a statement of special educational needs, or an education, health and care plan issued by or with the support of Camden local authority.

When oversubscribed, places in each band will then be offered in accordance with the criteria below.

**1. Looked-after and previously looked after children.** Looked-after children or children who were previously looked after but immediately became subject to an adoption, child arrangement or special guardianship order including those who appear (to the admission authority) to have been in state care outside of England and ceased to be in state care as a result of being adopted.

**2. Siblings.** Applicants with a sibling living at the same address who is on the roll of the school at the time of admission.

**3. Exceptional medical or social need.** Applicants considered by the admissions authority to have an exceptional medical or social need that only Camden School

for Girls is able to meet. Applications will only be considered on this basis if the 1A looked after child is a child who is (a) in the care of a local authority, or (b) being provided with accommodation by a local authority in the exercise of their social services functions at the time of making an application to a school. 2 Sibling is defined in these arrangements as; a sister or brother, a half-sister or brother, an adopted sister or brother, a step-sister or brother or the child of the parents' partner where the child for whom the school place is sought is living in the same family unit and at the same address as that sibling. The case is made known to the school and supported by appropriate evidence at the time of the original application. This evidence will normally be in the form of a letter from a suitably qualified professional such as a doctor, consultant or social worker. As the school is a secular foundation, the religion of the applicant will not be considered an exceptional need. Children of a member of staff where the member of staff has been employed by the school for two or more years at the time of application or where the member of staff is recruited to fill a vacant post for which there is a demonstrable skill shortage can be admitted under this criterion.

**4. Music aptitude.** We are looking for students who show exceptional musical aptitude and/or ability. Three places are offered on the basis of musical aptitude. Five places are offered on the basis of musical aptitude and ability. All music applicants will sit a multiple-choice listening aptitude test in music. This test is designed to be an objective measure of musical aptitude and does not require any prior training, practice or knowledge of music theory. The three highest scoring candidates will be informed that should they wish to apply for a place at the school, they will be offered a place on the basis of musical aptitude (if Camden School for Girls is matched by the secondary transfer system as a preference). The remaining 50 highest scoring candidates in this listening test will be invited back for a performance audition. Students will be asked to perform on one or two instruments/voice for up to 5 minutes to further demonstrate their musical aptitude and ability for consideration for the other five places. Music places are offered prior to places being offered under the distance criterion. Applicants must also sit the

banding assessment. Waiting lists will be maintained of music candidates who are not at first successful. These lists will be in rank score order and any vacancies will be filled from those lists. All music applicants who are not offered a place under this category will automatically be considered for other places according to any other category that may apply.

**5. Distance.** Applicants whose permanent home is nearest to the school, measured in a straight line (as the crow flies) from the centre of the pedestrian gate in the perimeter fence on Sandall Road. The school will carefully verify the permanent home addresses of applicants. In the event of more than one child being tied for entry under the distance criterion, the place will be randomly allocated. This process will be independently verified. Please see our website for more information about distance and to find out how far away you live from the school.

## **Sixth Form admissions**

Each year the school admits a minimum of 140 external students into Year 12 of the sixth form for a two-year linear A Level course. The actual number of places available to external students joining the school in Year 12 depends on the number of internal students continuing into the sixth form. In addition, 30 students will be put on the waiting list.

## **How places are allocated**

The basic qualification: All applicants must have an academic reference from their current school stating their predicted grades. These must in all cases include GCSEs at grade 6 or above in English language and mathematics, and three other GCSEs at grade 6 or above. To study Further Maths students must be predicted a minimum of grade 7 in GCSE mathematics. Places will first be offered to applicants meeting the basic qualification (and any higher individual grade requirements in relation to their specific subjects) who have an Education Health and Care (EHC) Plan naming the school (issued by their local authority).

**• Sixth Form Open Day: Tuesday 18 November 2025. Entrance is by ticket only. Tickets will be available on website from Wednesday 1 October 2025. Please check our website nearer the time.**

# Admissions criteria for La Sainte Union Catholic School

**Applicants should carefully read the school's complete admissions policy on the school website: [lasainteunion.org.uk](http://lasainteunion.org.uk)**

## Year 7 admissions

La Sainte Union was founded to provide education for children of Catholic families and is conducted by its governing body as part of the Catholic Church.

Whenever there are more applications than places available priority will always be given to Catholic applicants, according to the oversubscription criteria below.

Applications are welcome from girls of all backgrounds and denominations.

As a Catholic school, we aim to provide a Catholic education for all our pupils. It is essential that the Catholic character of the school's education is supported by all families in the school. All applicants and candidates are expected to give their full support for the aims and ethos of the school.

The governing body is responsible for admissions and intends to admit 120 girls to Year 7 in the school year beginning September 2026.

## Oversubscription criteria

Girls from all faiths are very welcome to apply to La Sainte Union, as long as they adhere to our values. In the event that we are oversubscribed, which was not the case last year, priority will be given to:

**1. Baptised Catholic Looked After Girls and previously Looked After Catholic girls.**

Looked After girls are girls who were looked after but ceased to be because they were adopted (or became subject to a Child Arrangement Order or Special Guardianship Order);

**2. Baptised Catholic girls**

**3. Other Looked After Girls and previously Looked After girls (the latter being girls who were Looked After but ceased to be so because they were adopted (or became subject to a Child Arrangement**

**Order or Special Guardianship Order);** This also includes previously looked after children who were in state care outside of England and ceased to be in state care as a result of being adopted.

**4. Catechumens and members of an Eastern Christian Church.**

**5. Other Christian Girls from families of other Christian denominations whose application is supported either by a certificate of baptism or by a letter from their faith leader confirming membership of the faith community.**

**6. Girls of other faiths whose application is supported by a letter confirming membership of that faith and signed by the appropriate minister of religion or faith leader.**

**7. All Other Girls**

Up to 12 places will be reserved for applicants who show aptitude in music. Applicants who wish to be considered under this criterion are invited to submit their child's name for an Aptitude Test. Places will be allocated on merit, but priority will always be given to Catholic girls.

Where the number of candidates in any of the categories listed above exceeds the number of places available, places shall be allocated in accordance with these provisions in the following order:

**1. After the first category [i] of Catholic Looked After Girls', the Governing Body will give top priority within a category to an application where compelling evidence of exceptional need is provided at the time of application. This may be from an appropriate professional such as a doctor, priest or social worker, identifying an exceptional social, medical, pastoral or other need of the Catholic girl, which can only be met at this school rather than any other school.**

**2. Girls who have a sibling already on roll at La Sainte Union and who will continue to attend La Sainte Union during the following year.**

**3. Girls who have a sibling already on roll at William Ellis School and who will continue to attend William Ellis during the following year.**

**4. The location of the permanent address of the candidate, with priority within this category being accorded to those living the shortest distance from the school. This will be measured by Camden LA. In the event of a number of candidates being the same distance from the school, a lottery will be used to offer places. This will take place in the presence of an independent witness.**

## E-admissions form, supplementary information form and other requirements

All applicants **MUST** complete:

- the e-admissions form. **It must be returned to the child's Home LA by 31 October 2025. If you do not name La Sainte Union as a choice on the e-admissions form, the Governing Body will be unable to offer your child a place.**

- the school's own Supplementary Information Form. This is available on the school's website and should be returned electronically to the school **by Friday 31 October 2025. Without the Supplementary Information Form, Governors will be unable to consider your application fully and your child may not get a place at the school as the application will be considered under criterion 7.**

Applicants applying as a Baptised Catholic Girl must upload a scanned copy of their daughter's Baptism Certificate, or proof of reception into the Catholic Church, with their electronic application form or provide the Admissions Officer with a copy of the child's Baptism Certificate by the closing date.

If application is being made for a place at the school as a member of another Christian denomination or another faith a letter confirming membership of that Christian denomination or faith and signed by the appropriate minister of religion or faith leader, will be required. The letter should be provided at the same time as this form is returned to the school by the closing date.

These oversubscription criteria have been extracted from the school's admissions policy. Please see the school's website or contact the school directly to obtain the full policy.

# Admissions criteria for Maria Fidelis Catholic School FCJ\*

**Applicants should carefully read the school's complete admissions policy on the school website: [mariafidelis.camden.sch.uk](http://mariafidelis.camden.sch.uk)**

## **Year 7 admissions**

Maria Fidelis Catholic School FCJ was founded to provide education for children of Catholic families and is conducted by its governing body as part of the Catholic Church.

As a Catholic school, we aim to provide a Catholic education for girls and boys and it is essential that the Catholic character of the school's education is supported by all families in the school.

The governing body has sole responsibility for admissions to this school and intends to admit 150 children to Year 7 in September 2026.

## **Oversubscription criteria**

When the number of applicants exceeds the admission number, offers of places are made using the following order of priority:

1. Catholic looked-after children and Catholic children who have been adopted or made subject to child arrangements orders or special guardianship orders.
2. Baptised Catholic children with a Certificate of Catholic Practice.
3. Other baptised Catholic children.
4. Other looked-after children (see [1] for definition).
5. Catechumens and baptised children of Eastern/Orthodox Churches with a baptism certificate or a letter from their priest confirming enrolment in the catechumenate of the Catholic Church.
6. Other Christian children whose application is supported by a religious leader.
7. Any other children.

**Note: children from 34 named feeder schools will be given priority in each category.**

If there are insufficient places to admit all candidates in any of the above categories, priority will be given to those living closest to the school measured 'as the crow flies' from home address to centre of the school. The address given must be the one in which the child normally lives.

The governing body will give top priority, after the category of looked-after children, to children whose exceptional medical, social or pastoral needs justify a place at the school where compelling written evidence is provided, at the time of application, from an appropriate professional e.g. doctor, priest or social worker.

The attendance of a sibling at the school at the time of enrolment will increase the priority of an application within each category.

## **Sixth Form admissions**

Current pupils will make an application to indicate their subject choices, and they will all be offered a Sixth Form place, subject to fulfilling the individual requirements of suitable courses. Governors propose to admit a minimum of 30 external applicants annually to the Sixth Form with the required academic qualifications for the proposed course of study.

Application forms are available on the Sixth Form section of the school website. In the event of oversubscription, the criteria and priorities listed in this policy will apply.

## **Application procedure**

All applicants must complete a Common Application Form (CAF) available from and returned to the local authority in which they are resident by **Friday 31 October 2025**. Most people now complete this online. Applicants should also complete the Maria Fidelis Supplementary Information Form (SIF), available from the school or the local authority and returned to the school by **Friday 24 October 2025** with all relevant paperwork.

Those wishing to be considered under Criterion 2 or 3 should provide the school with a copy of the child's baptismal certificate. Those applying under Criterion 2 should obtain a Certificate of Catholic Practice form from the parish or diocesan website, fill in the top part and ask their parish priest to sign it.

These oversubscription criteria have been extracted from the school's admissions policy. Please see the school's website or contact the school directly to obtain the full policy.

*\* FCJ – Faithful Companions of Jesus*



# Admissions criteria for William Ellis School

**Applicants should carefully read the school's complete admissions policy on the school website: [williamellis.camden.sch.uk](http://williamellis.camden.sch.uk)**

## **Year 7 admissions**

The school will admit up to 112 boys into Year 7 and will also fill in-year vacancies in any year up to Year 11. In the event of over-subscription to the school, the following criteria will be applied in order:

- 1.** Looked after children. This can include a child who was previously looked after but immediately after being looked after became subject to an adoption, child arrangement or special guardianship order.
- 2.** Applicants with a brother in the school or sister in William Ellis Sixth Form or on roll at Parliament Hill School or La Sainte Union School at the time when the applicant is to join. This can include siblings in the sixth form as long as they are on roll at our school, or at Parliament

Hill or La Sainte Union and will still be on roll when the sibling joins.

- 3.** Applicants who can demonstrate that admission to William Ellis School is necessary on the grounds of professionally supported medical or social need. Parents/carers must supply details of any such special factors at the time of the original application, together with supporting documentation. Such applications will not be considered without professional support – such as a letter or report from a doctor, consultant or social worker and which must be no more than six months old. All information submitted will be regarded as confidential. The supporting documentation will need to support the link between the need and the school.

- 4.** Applicants who can demonstrate musical aptitude as measured by the school's assessment criteria. Up to 10% of places will be offered on this basis. For further details, please visit [williamellis.camden.sch.uk/secondary-transition](http://williamellis.camden.sch.uk/secondary-transition).

- 5.** Applicants who have a parent employed at the school for two years or more at the time of application and/or children of a qualified teacher training at William Ellis School who has been recruited to fill a vacancy for which there is a demonstrable skills shortage.

- 6.** Applicants who live closest to the school, measured in a straight line to the centre of the school.

These oversubscription criteria have been extracted from the school's admissions policy. Please see the school's website or contact the school directly to obtain the full policy.



# Admissions criteria for The UCL Academy

Admissions to The UCL Academy follow the same criteria as Camden community schools, with the exception of 18 places offered to those with an aptitude for visual arts.

For further information and full details of The UCL Academy's admission criteria, please visit [uclacademy.co.uk/admissions](http://uclacademy.co.uk/admissions)



# Post-16 in Camden

## **Students in Camden benefit from access to the successful and expanding post-16 offer available across every secondary school in the borough.**

Our Sixth Forms continue to go from strength to strength, with improved exam results and an impressive alumni of students who have gone on to achieve and succeed in a wide range of careers.

Choosing a Sixth Form in Camden opens up a world of opportunity and is a pathway to future success.

## **Secondary school Sixth Forms**

Camden School for Girls, Hampstead, Haverstock, Maria Fidelis, Regent High and UCL all offer individual Sixth Forms. The wide range of courses and subjects these offer, both academic and vocational, ensures that every young person's talents and interests are catered for, enabling each student to enter higher education, or the world of work, equipped with the qualifications and skills they need to succeed in their chosen path.

Our school Sixth Forms boast impressive learning facilities, outstanding enrichment and extracurricular programmes, including mentoring opportunities and volunteering within the community, as well as careers advice and personalised guidance and support during the university application process.

For more information visit the relevant school pages 22 to 51 and their admission pages 14 to 20.

## **Information for students about options after Year 11**

At 16, students can either stay in full-time education or start working in a job that includes part-time education, such as an apprenticeship or training.

Find out more about local sixth forms and colleges and read Camden's Post-16 Prospectus, which is a guide to the range of available options, at [camdenrise.co.uk/sixth-forms-and-colleges](http://camdenrise.co.uk/sixth-forms-and-colleges)

## **LaSWAP Sixth Form**

Students in Camden can also attend our LaSWAP Consortium, the largest post-16 provision in Camden and the longest established Sixth Form consortium in London. It combines the strengths of its four partner schools: Acland Burghley, La Sainte Union, Parliament Hill and William Ellis and aims to ensure outstanding progress and achievement for all students, equipping them for future success.

The LaSWAP team of specialist teachers provides consistently excellent teaching. The consortium enjoys a well-deserved reputation for high expectations and academic success. Students benefit from a wide range of academic and vocational subjects and enjoy a curriculum that is up-to-date, innovative and forward looking. Students are based in one of the four schools where they take at least one of their courses, as well as being able to access subjects in any of the other three schools.

LaSWAP students have the opportunity to develop personally and academically within a structured environment that offers the flexibility and diversity of a college with the individual care of a school community. They receive excellent advice and guidance on future opportunities, including support from a nationally renowned team of higher education advisors.

## **Admissions criteria for LaSWAP Sixth Form**

LaSWAP is open to all Sixth Form students who meet the specified entry requirements for the courses on offer. In the event of more applicants who meet the entry requirements than places, available places will be allocated according to the following criteria in order of priority:

1. Looked-after children or a child who was previously looked-after but immediately after being looked-after became subject to an adoption, child arrangement or special guardianship order.
2. Existing students of the school who are continuing their studies from Year 11.
3. Applicants who are judged to have an exceptional social or medical need. There will need to be a very clear link between the child's exceptional need and the school. Parents/carers will need to submit a case supported by appropriate professional evidence from a doctor, social worker, or similar professional. That evidence will need to support the link between the need and the school.
4. Distance, as measured in a straight line from the child's home address to the centre of the school where LaSWAP is based, using the local authority's computerised mapping system. Those living closer to the school receive the higher priority.

For more details visit [laswap.camden.sch.uk](http://laswap.camden.sch.uk)

**LaSWAP**  
THE SIXTH FORM OF CHOICE

# Acland Burghley School



Creating excellence together

## Headteacher

Nicholas John

## School address

Burghley Road, London NW5 1UJ

T: 020 7485 8515

E: [info@aclandburghley.camden.sch.uk](mailto:info@aclandburghley.camden.sch.uk)

W: [www.aclandburghley.camden.sch.uk](http://www.aclandburghley.camden.sch.uk)

Ages 11 to 19

DfE number 202 / 4285

## Places available September 2026

182 (including four places in resource base for students with autism)

## Open Evening

Wednesday 24 September 2025, 5 to 7pm

## Open Mornings

23, 24 and 25 September 2025, 9 to 10.30am

## Sixth Form Open Evening

Thursday 27 November 2025, 4.30 to 7pm at William Ellis and Parliament Hill Schools (pre-registration is required – see the school website or [www.laswap.camden.sch.uk](http://www.laswap.camden.sch.uk))

## Camden School Report



## School fact file

We are a thriving mixed community comprehensive for students aged 11-19. Academic excellence and creativity are at the heart of our curriculum offer.

An inclusive community in which all pupils feel welcome" with "High expectations for all" where "Pupils enjoy school. They are enthusiastic, happy and take pleasure in learning." In October 2023, Ofsted confirmed us again as a 'good' school.

Our excellent provision in the arts and sport encourages student creativity and resilience, providing enriching experiences for all. All students benefit from our unique and UK-first partnership with our resident orchestra, the Orchestra of the Age of Enlightenment and the school has been awarded the Artsmark Platinum Award by the Arts Council for its strong commitment to the arts. Our sports teams regularly win competitions such as the Camden Shield, London Schools Football Cup and the Junior NBA semi-finals.

Students and parents consider the home-school communication to be a strength of the school and our students have been ranked by Ofsted as some of the happiest in the country. Our induction programme supports effective transition from Year 6 to secondary school.

## Dear Parents and Carers

We are proud to invite you to visit Acland Burghley School.

It is an exceptional place for children to learn. Our rich, academic and creative curriculum supports students to become independent, self-regulating young adults. Every student is an individual who is entitled to achieve their full potential, building on the foundations they have laid at primary school.

We put great emphasis on high standards of literacy, mathematics, science, languages and sport, preparing every child for progression to university or further study. We are also proud of our distinctive arts specialism. Art, music, dance and drama are key strengths. We provide excellent facilities such as a professional dance studio, a gym, sports hall and two outside areas for sport. There is also an active space for play, a quiet green space for keen gardeners and an iconic standalone Assembly Hall which is set to undergo a transformation into a thriving performing arts and community venue in the near future. The brand-new media suite incorporates a green screen, recording studio and specialist equipment. The wide range of extracurricular clubs and activities includes chess, creative writing, debating, cooking and computing.

Children are supported in their school journey by friendly and approachable staff, who believe in them, and challenge them to achieve their goals. Our happy, diverse community supports all students to be confident and outward looking, so that they can be the best that they can be. We look forward to meeting you soon.

Yours sincerely,

Nicholas John, Headteacher

Martha Collins, Head of School



## Creating Excellence Together

**“An inspirational example of what can be achieved by putting compassion, community and creativity at the heart of a school’s educational model. Burghley has an undeniable warmth and buzz.” The Good Schools Guide, February 2025**

We are proud to be a mixed, truly comprehensive school which values every one of our students and supports them to be the best that they can be. We work closely with our partners in the LaSWAP Sixth Form Consortium, Camden Learning and organisations and businesses that are based locally such as the Francis Crick Institute, UAL and Google to secure the best outcomes for local children from a diverse range of backgrounds.

Our Additional Needs Faculty for children with SEND is strong with a wide range of specialist teachers and TLAs within the department and all students do well at Acland Burghley, regardless of their starting points.

Students are supported by their teachers, tutors, Year Team Leaders and an additional three members of pastoral staff called Student Progress Leaders. SPLs provide additional capacity within Year Teams to help students with any concerns they may have. Meanwhile tutor

groups provide a strong cohesive ‘home’ throughout your child’s journey with us.

We offer a wide programme of extracurricular clubs and the school places great importance on trips and cultural activities. Recent trips have included the Duke of Edinburgh practice expedition to Epping Forest, a Football Tour of Holland, the Year 7 Residential trip to Norfolk and a visit to a local care home to interview a centenarian.

## Curriculum

**“Leaders have developed a curriculum that is ambitious... The curriculum progressively builds on pupils’ knowledge over time. Teachers have strong subject knowledge and present information clearly during lessons. They make adaptations to ensure that pupils with SEND can access the same ambitious curriculum.”**

**Ofsted, October 2023**

Throughout Key Stage 3, your child will follow a shared curriculum that builds on their achievements at primary school. We provide a broad and balanced programme, including all core subjects and either French or Spanish. In Year 9, keen language learners can also choose to study both French and Spanish with the option of taking up both subjects at GCSE.

All Year 7 students study Latin once a week, and it is a popular choice at GCSE.

As well as art, drama and music, all students in Key Stage 3 also study dance, culminating in the annual Dance Show. Drama productions are supported by our team of Dreamchasing Young Producers, young sound, tech and staging apprentices trained to professional standards by volunteers from the Orchestra of the Age of Enlightenment.

All class groups are put together to ensure a high level of stretch and challenge. At Key Stage 4, students have the flexibility of following the EBacc pathway or choosing up to 2 creative subjects together if it is appropriate for them. This year’s GCSEs saw our best ever results for a strong pass in English and maths and of all the grades awarded, a phenomenal 30% of them were at the highest 9-7 mark.

Our robust Personal Development programme also equips students with the critical thinking skills required to navigate their futures. Topics covered include personal health and relationships, social and mental wellbeing, citizenship and economic education.

We encourage creativity across the curriculum, stimulating personal growth, self-confidence and success. We build students’ ability to think creatively, express themselves confidently, and engage with the world around them. Through this approach, our students can become expert life-long learners.

## Unique opportunities

**“At a time when the arts seem marginalised in so many state schools, this was a heartwarming example of what fine standards can be achieved with inspiring leadership.”**

**The Times on Acland Burghley’s participation in Fairy Queen, the OAE Community Opera, January 2024**

All students take part in workshops delivered by our resident orchestra. This includes the Musical Connections project in collaboration with the Additional Educational Needs Faculty, specialist sessions with GCSE music students and the innovative Young Producers Club in which interested students learn production, marketing and event management skills and host their own event – Live at the Hex.

2024 also saw the unveiling of our upgraded Media Collaboration Suite which gives students in Key Stage 4



and 5 incredible access to an industry-standard software and equipment. Students in year 7 can also benefit from the space by joining the popular podcasting club.

Additionally, there are multiple opportunities for student leadership. Students can join the Student Council, become a Student Ambassador or sit

on the Student panel at staff interviews. Students also work with the Anne Frank Trust every two years and become peer educators on the theme of tolerance. Meanwhile peer mentors play an important role in the transition process to ensure younger students settle well into school life.

## Sixth Form

Acland Burghley Sixth Form is part of the highly successful LaSWAP Consortium, which includes La Sainte Union, Parliament Hill and William Ellis. We offer an unrivalled range of AS and A Level subjects and a comprehensive range of vocational courses.

From September 2025, students will also be able to enrol on a range of T Level courses, a new post-GCSE qualification that combines in-class learning and extended industry placements, including the Media, Broadcast and Production T Level at Acland Burghley.

Outcomes and destinations at LaSWAP are consistently strong. 2024 saw the best results for the consortium since A Levels were reformed from 2015. Over three quarters of students secured their first or second choice university offers at top institutions, including at Oxbridge or industry-based courses, including apprenticeships, in this year.

True to our ethos, we are particularly proud that students from disadvantaged backgrounds achieved extremely good results, including A\* grades in A Levels and Distinctions in BTECs, progressing to competitive courses and universities.

## Parent feedback

**“The school has such a positive and purposeful air to it, each and every one of my child’s teachers are thoughtful and engaged (and delightful) – and he clearly respects and enjoys their teaching. He and we are very lucky to be part of this community”**

**“The support we’ve had from your team has been outstanding – caring, considered and (crucially) meticulously joined up across all departments.”**

**“I will be forever grateful for their kindness and dedication. It was a brilliant experience for him – and for us. He leaves you in really great shape”**



# Camden School for Girls

## School fact file

2024 GCSE results were well above the national average: 93% of all results across all subjects were 9-4 (standard pass) and 54% of all results were grades 9-7.

2024 A Level results were also above the national average: 77% of students achieved A\* to B grades and 50% achieved A\*- A grade.

In 2024, 22 of our students gained places at Oxford, Cambridge and Medical School.

Extracurricular activities are of an exceptionally high calibre in music, debating, science, art, PE, literature, humanities and languages, philosophy, design and technology.



### Headteacher

Kateryna Law

### School address

Sandall Road, London, NW5 2DB

T: 020 7485 3414

E: [csg@csg.school](mailto:csg@csg.school)

W: [www.csfg.org.uk](http://www.csfg.org.uk)

**Ages** 11 to 19

**Places available September 2026**

120

**DfE No** 202 / 4611

### Open Evening

Monday 22 September 2025, 5 to 7pm

### Open Mornings

17 and 19 September 2025, 9 to 11am

### Sixth Form Open Event

Tuesday 18 November 2025. Tickets will be available from 1 October 2025 - check the website nearer the time





"I'm so grateful for the progressive toolkit that Camden School for Girls has given me for entering the real world" **Former student**



## Mission

**"The school maintains its roots and traditions whilst providing the students with an outstanding quality of education, ensuring they are ready to make their mark in the 21st century world in which they live."**

### Camden Learning

Our aims are to:

- maintain and develop the school's tradition of providing the highest quality of education
- offer equality of opportunity and care for all students, whatever their race, gender, class, creed or special needs
- promote a sense of environmental and social responsibility
- encourage all students to:
  - develop their individual talents to the full
  - have confidence in themselves and a sense of self-worth
  - work co-operatively with others
  - develop independence of thought
  - value education and enjoy learning
  - be tolerant and open-minded
  - show consideration for others and respect their diverse qualities and needs
  - sustain and promote the school's ethos, heritage and philosophy within the contexts of public policy, social trends and educational need.

## Curriculum

We offer an extensive range of subjects, within and beyond the National Curriculum.

In Years 7-9 students study a language (French or Spanish), computing, art, music, DT, geography, history, theology, in addition to English, mathematics and science. This broad range of subjects allows all students to get a good grounding before they begin GCSE study in Year 10.

A distinct part of our provision is our comprehensive offer. Classical studies is taught throughout Year 8, and students choose between classical studies and Latin in Year 9.

Key Stage 4 (years 10-11) offers a wide range of academic and vocational, traditional and modern subjects including art, hairdressing and beauty therapy, health and social care, classical civilisation, geography, Greek, history, computing, Latin, triple science, music, further maths, computer science, PE, theology, philosophy, sociology, product design and textiles.

## Experience for life

We offer a range of performance opportunities, including a 70-piece symphony orchestra and numerous smaller ensembles. We present many concerts and offer many performance opportunities for all students. We have received the Mayor of London's Music Award.

Other activities for students include debating, dance and a wide range of sports. Our PE department offers a large selection of activities including trampolining, football, netball, basketball, volleyball, badminton, athletics and dance. The department has strong links with the Highgate Harriers and Arsenal Football Club and school teams participate in a wide range of borough and London based competitions. We make excellent use of London's attractions, including trips to theatres, art galleries, museums and sites of historical, artistic, scientific, technical, religious, literary or geographical interest. Trips abroad are organised for some year groups. All departments organise homework clubs after school and at lunchtimes to further students' learning and knowledge.



## Unique opportunities

The school develops leadership opportunities through the school council and senior prefect elections. Students are offered a wide range of clubs and societies, such as the philosophy club, debating society and feminist club, where their input is valued when developing and maintaining whole-school initiatives.

**"Once you've entered the Camden community, you never really leave."**  
Main School Head Prefect



# Hampstead School



**HAMPSTEAD SCHOOL**  
Learning together Achieving together

## Headteacher

Matthew Sadler

## School address

Westbere Road, London, NW2 3RT

T: 020 7794 8133

E: [enquiries@hampsteadschool.org.uk](mailto:enquiries@hampsteadschool.org.uk)

W: [www.hampsteadschool.org.uk](http://www.hampsteadschool.org.uk)

## Ages 11 to 19

## DfE number 202 / 4275

## Places available September 2026

210

## Open Evening

Tuesday 7 October 2025 from 4.30pm

## Open Mornings

(please arrive for 9.15am)

30 September, 1, 7, 14, 15 October 2025

## Sixth Form Open Evening

Tuesday 21 October 2025, 4.30pm

## Camden School Report



## School fact file

"Leaders have established a calm and purposeful learning environment where pupils are encouraged to 'Think Big, Work Hard and Be Kind'. Ofsted, 2023

"A hard-working school with a strong ethos of self-improvement that really walks the walk when it comes to inclusion and ambition for all its students. Hampstead knows its students well and creates a strong sense of community."

**The Good School Guide 2025**

## Mission

We pride ourselves on our reputation as a high achieving school, where expectations are challenging. Our students make rapid and sustained progress. We are not complacent and seek to ensure that we maximise the potential of every new cohort of Year 7 students.

Central to all we do is the quality of the relationships we build with our students. It is these relationships that have been the stepping stones to our success. Our staff take the time to learn about the young people in our care. This fosters a positive rapport and conducive environment for our students to flourish.

"There's a purposeful atmosphere about the place and a real sense that the school is a safe haven for many of its students." **The Good Schools Guide 2025**

Our vibrant and energetic student community is founded on values of self-discipline, reflected in our School of Sanctuary award and partnering with the University of Sussex.

## Curriculum

Our curriculum is inspirational and aspirational, challenging every child as an individual. All children have a right to a broad, balanced and relevant education, which provides continuity and progression and takes individual differences into consideration. Students are grouped by ability when appropriate, receiving extra support to help each student reach their full potential.

"Leaders have high expectations of pupils' behaviour. Corridors and social spaces are calm and orderly. High levels of attendance demonstrate pupils' positive attitude to their learning." **Ofsted, 2023**



## Bright Futures

We provide a diverse and rich learning environment in which students further develop their skills as independent learners. We work hard to ensure that they have the knowledge and self-belief to compete and flourish in a changing educational and social environment, no matter how challenging. We encourage students to develop enquiring minds and to make the most of the many opportunities for positions of responsibility, including peer mentors and prefects.

Our provision of personalised and tailored support, enables students to develop confidence and respect. We actively encourage our students to take responsibility for their own learning, recognising and celebrating them as individuals with unique skills, talents and interests. Our Student Leadership Team makes positive contributions towards shaping change in our school.

We are proud that all our students leave us with strong ambitions and a clear vision of their future, with the capacity to achieve it.

## Experience for Life

Our extensive range of clubs include numerous sports, an artist-in-residence, homework, computing, science, poetry reading and writing, debating and history and mathematics societies. Enrichment days are a regular feature of life at Hampstead School, including visits to museums, exhibitions, universities and galleries. Students also enjoy longer residential visits such as ski trips, languages trips and study tours.

**“Leaders provide a range of clubs and activities for pupils to attend at lunchtime or after school, including a range of sports and performing arts clubs.” Ofsted, 2023**

## Strong Ambitions

Last year, when Zeba chose to apply for the JP Morgan apprenticeship scheme, she knew there were over 10,000 candidates vying for a handful of places. As she clicked ‘send’, she thought ‘I’m from Hampstead, I’m different’...and she was right. Zeba is now working at JP Morgan in Canary Wharf.

Shania is designing beautiful buildings at the Bartlett School of Architecture, Kayden pushed himself in a Year 11 revision class and Dean tested a hypothesis in a Year 7 Science lesson. Our students, and their ambition, curiosity, effort and integrity - define who we are.

## School of Sanctuary

Hampstead School has been recognised for its commitment to creating a safe, welcoming and inclusive environment for all - especially those seeking sanctuary or facing challenges due to forced migration. Why is this award important? A School of Sanctuary combats misinformation regarding refugees and asylum seekers, support vulnerable students and their families and helps to build a just and equitable society for all.

**“The ‘incredibly dedicated’ EAL department does ‘stand-out work’ in providing ‘a caring and inclusive environment’, according to happy parents: Ofsted apparently drew on it for their research.” The Good Schools Guide 2025**



School of  
**SANCTUARY AWARD**  
Welcoming People Seeking Sanctuary

**“Diversity is celebrated and unkind or discriminatory behaviour is not tolerated”. Ofsted, 2023**

**“Friendly students greeted us with smiles and ‘Hello, Miss’ as we went around, and the dining hall was a happy hubbub at lunchtime” The Good School Guide 2025**



## HAMPSTEAD SCHOOL



### Sixth Form

In Year 12, students choose from a variety of courses taught at Level 2 and 3. These range from traditional subjects such as Mathematics, Computing and History, to truly vocational courses including Financial Studies and Health and Social Care which lead to university or apprenticeships.

Our curriculum is strongly complemented by a comprehensive enrichment programme. Activities include overseas residential visits, workshops with film directors at the Roundhouse, performing at the Donmar Warehouse theatre, Digital Leaders Programme, Model United Nations and visits to West End theatre shows and museums.

Our students also take advantage of the plethora of opportunities with university visits and workshops, national competitions in debating and mathematics, internships with top City banks, hospitals and law firms, as well as bespoke work experience, to name just a few!

We are continuing to foster a culture whereby our students and parents work in partnership with us, to ensure every student receives an enriched learning programme that supports them to become confident, well-rounded young adults.

“Plenty of outdoor space including Astro and netball/ basketball courts, plus full-size sports hall, gym, dance studio and swimming pool: sport is a big deal here – basketball especially.” **The Good Schools Guide 2025**



# Haverstock School

## School fact file

A broad, inspiring and dynamic curriculum to challenge all learners and harness their curiosity.

A respectful and supportive environment where students behave well, feel safe, and are motivated to learn, reflecting the school's high expectations and commitment to personal development.

Exceptional pastoral care and support, encouraging students to be aspirational and motivated for their futures whilst nurturing and supporting their wellbeing.

Expansive co-curricular offer encompassing academic, sporting, cultural, creative, citizenship and careers activities.

World-class preparation for the next stage of our students' lives through our well-established Haverstock Careers Programme.

## Dear Parent / Carer

Thank you for considering Haverstock School for the next stage of your child's journey. We are a joyful, ambitious, and deeply caring school—and we would be honoured to welcome your family into our community.

From their very first day, your child will be known, valued, and encouraged to thrive. Our school is a place where kindness matters, individuality is celebrated, and high expectations are matched by strong support. It's a calm, focused environment where young people can truly flourish.

At Haverstock, learning stretches far beyond the classroom. Whether your child dreams of coding an app, performing on stage, writing for the school magazine, or captaining the football team, we'll help them explore their passions and discover new talents. Our exciting timetable of co-curricular activities—ranging from debating and journalism to STEM club and the Duke of Edinburgh Award—builds confidence and inspires joy.

We're also incredibly proud of our award-winning careers programme. Every student benefits from personal mentoring, inspiring workplace visits, employer talks, and hands-on experiences that link learning to future goals. Whether your child is aiming for university, an apprenticeship, or something still to be discovered, we're here to guide and champion them.

Most of all, we believe every child—no matter their starting point—can achieve something great. Our school blends aspiration with care, ambition with belonging. We warmly invite you to visit and see this for yourself.

With warmest wishes,



**Katie Metselaar**



### Head of School:

Katie Metselaar

### School address

24 Haverstock Hill, Chalk Farm,  
NW3 2BQ

T: 020 7267 0975

E: [Office@H3Federation.org.uk](mailto:Office@H3Federation.org.uk)

W: [www.haverstock.camden.sch.uk](http://www.haverstock.camden.sch.uk)

**Ages** 11 to 19

**DfE number** 202 / 4104

**Places available September 2026**  
135

### Open Evening

Wednesday 1 October, 4.30 to 6.30pm

### Open Mornings with tours of classrooms:

Drop in any Thursday from 9 to 10am  
from 25 September to 23 October 2025

### Sixth Form Open Event

Wednesday 26 November 2025,  
4.30 to 6.30pm

### Camden School Report





### Mission

We ensure that every student flourishes into a confident and highly competent young adult with the knowledge, skills, qualifications and attributes for a successful and fulfilling life.

We develop students' independence and resilience and we support them to become well-informed citizens who are well-prepared for a complex and competitive world.

We maintain a highly stimulating, friendly and supportive learning environment with a modern, building that is totally learning-focused so that all children thrive.

We build strong relationships with the children, families and community, ensuring that every child has a seamless transition into their secondary education. Families who are new to us will quickly feel the benefit of our superb pastoral care.

Our ethos of 'Aim High, Step Forward, Be Kind' is the bedrock of our offer to and expectations of every student.

### Curriculum and Co-curriculum

Our stimulating, innovative and creative curriculum is delivered by highly qualified and committed teachers who motivate students and prepare them for the demands of GCSE and Sixth Form qualifications. Our broad and engaging Key Stage 3 (Years 7-9) curriculum is designed to develop students' knowledge and expertise across a wide range of subjects before selecting from a wide range of GCSEs and several vocational options to study during Years 10 & 11.

We build a detailed academic and pastoral profile of each learner and develop it during their time at Haverstock. Each child is provided with and adds to a professionally produced record of achievement files as they progress through the school.

With class sizes never more than 30, and often significantly lower, we tailor our teaching and support to match learners' talents, interests and needs. As well as our regular communications regarding each child's progress, we actively

encourage parents to raise questions or concerns, however small, so that we can work in partnership to ensure that each child is as successful as possible.

All of our students will be able to access our Co-curricular programme which is carefully designed to broaden their horizons and to develop new skills, hobbies and interests beyond what is formally taught.

Highlights include: our close partnership with The Roundhouse, including professionally run creative projects. Sporting activities such as, football, basketball and trampoline with opportunities to represent the school in a range of local and national competitions. Camden Summer University programmes. Extensive partnerships between our Creative and Performing Arts departments and Central Saint Martins, the V&A, Wigmore Hall and the Royal Albert Hall.

Our Co-curricular programme is more than just school clubs; it's about developing character and experience. Our students will become more determined, more committed, better at teamwork and more confident individuals and leaders who can compete with the best students in the country.

**"I'm so grateful to Haverstock School for all the support and opportunities it has given my children. I wholeheartedly recommend it to any parent." Parent**

## Sixth Form

Over a third of Haverstock Sixth Form students attain places at elite Russell Group universities and also Oxbridge (42% in 2021) with a wide range of A Level and vocational courses along with unrivalled personal development and careers programmes, our growing Sixth Form is thriving and going from strength to strength. 2025 sees Haverstock School launch a second T Level qualification which will harness the already exceptional T Level and workplace opportunities that already exist in our school. Finally, we are the only school in Camden to offer students the opportunity to study alongside be part of a football academy. This brilliant partnership with Bloomsbury Academy has grown to include a highly successful girls' team.



"Six years ago, I chose Haverstock School because I'd heard good feedback from parents and it was a local school. Last year I had to make my choices again: I didn't hesitate to enrol my youngest in Haverstock School." Parent



# La Sainte Union Catholic School



**La Sainte Union**  
CATHOLIC SCHOOL

## Headteacher

Mrs Sophie Fegan

## School address

Highgate Road, London, NW5 1RP

T: 020 7428 4600

E: [admissions@lsu.camden.sch.uk](mailto:admissions@lsu.camden.sch.uk)

W: [www.lasainteunion.org.uk](http://www.lasainteunion.org.uk)

**Ages** 11 to 18

**DfE number** 202 / 5401

**Places available September 2026**

120

## Open Evening

Tuesday 30 September 2025, 4 to 7pm

## Open Mornings

14 and 16 October 2025, 9 to 11am

Headteacher Coffee Mornings on 22

and 23 October, 9am

Please register your place on the school website.

## Sixth Form Open Evening

Thursday 27 November 2025, 4.30 to 7pm at William Ellis and Parliament Hill Schools (pre-registration is required – see the school website or [www.laswap.camden.sch.uk](http://www.laswap.camden.sch.uk))

## Camden School Report



## Bright Women. Bold Futures.

La Sainte Union Catholic School is an 11-18 girls' school with a mixed sixth form, that is part of the renowned LaSWAP Consortium, situated on a glorious Georgian campus adjacent to beautiful Hampstead Heath.

We have a rich history and tradition of educating and empowering our students through a prodigious education, outstanding enrichment opportunities, exceptional pastoral care and an award winning careers programme. Our students, in turn, reward us by developing into kind, confident, articulate young women who go on to shine in their chosen field.

The testament is our amazing hall of fame, including alumnae following exemplary careers across the globe; from doctors, veterinarians and palaeontologists to lawyers, architects and entrepreneurs and from authors, journalists and mathematicians to musicians, actors and artists.

## School fact file

**"The school has high expectations of pupils' achievement. Pupils are keen to do well, and they are ambitious for their futures. Their successes are reflected in the outcomes they achieve at the end of Year 11." Ofsted 2024**

La Sainte Union is a high-achieving school and has consistently been in the top-rated schools nationally. More than a quarter of our Year 13 students secure a place at a Russell Group university, compared to the national average of 17%.

The school was rated 'Good' by Ofsted in December 2024 and 'Good' in the Section 48 Catholic Schools Inspectorate inspection report in May 2023.

**"The school's values of service, dignity, respect, academia, cooperation and excellence are embedded in the life of La Sainte Union." Ofsted 2024**

Additional achievements and awards include, but are not limited to, the National Quality in Careers Standard, Music Mark, QuIC award, International School Status, Jack Petchey Speak Out Challenge winners and being the founding member of London Citizens UK.

## Curriculum

Our rigorous curriculum is delivered by passionate, dynamic, forward-thinking staff who have a deep enthusiasm for their subject and inspire our students to achieve beyond their own expectations.

**“Pupils behave well in lessons and focus on their learning.” Ofsted 2024**

Students can study a wide range of subjects including STEM, humanities, the creative arts and modern foreign languages. We also lead the way in artificial intelligence, providing students, our local primary schools and the wider community with innovative and cutting-edge opportunities in this rapidly evolving field.

Throughout the curriculum, there is a constant emphasis on high levels of literacy, intellectual challenge and independent learning so that our students are prepared to progress at key stages, including KS3 to KS4, post-16 and post-18.

## Experience for life

Our outstanding enrichment programme encompasses educational visits in the UK and abroad (e.g. Paris, Spain, CERN in Switzerland and NASA in Florida), a wide range of clubs and activities (e.g. debating, robotics, music, drama and sports), workshops and events, leadership roles and philanthropy to enhance learning, nurture passions and promote cultural capital.

**“The school has great teachers who encourage and engage my daughter to participate in activities so that she feels valued as a part of the school community. La Sainte Union continues to offer great support to my daughter, giving her every opportunity to share her experience, skills and thoughts.”**  
Year 8 parent

**“Pupils are well prepared for life in modern society.” Ofsted 2024**

We ensure our students’ talents, success and endeavour are celebrated and recognised. They have the chance to represent their school in a range of team and individual sports, competing at a local and national level and regularly bringing home the silverware; they can take to the stage, participating in a number of school productions, performances and debating competitions; and they can take on positions of responsibility through leadership roles, committees and action groups.

Our award winning careers programme, led by a dedicated careers leader, addresses the individual needs of every student, enabling them to make bold, informed choices about their future. Through strong partnerships with local, national and global organisations, students are connected with employers from across a variety of sectors, enabling them to learn more about, and develop the skills they need to enter, their desired careers successfully.

**Everyone is so welcoming and supportive here at La Sainte Union. I feel I have settled in well and have made lots of new friends, especially thanks to the Induction Day and Summer School.”**  
Year 7 pupil





**"The school has great teachers who encourage and engage my daughter to participate in activities so that she feels valued as a part of the school community. La Sainte Union continues to offer great support to my daughter, giving her every opportunity to share her experience, skills and thoughts." Year 8 parent**

## Community

Whilst we are a Catholic school, we warmly welcome students of other faiths and beliefs, and those of none, who are ready to embrace our ethos and values. Interfaith dialogue is a key part of religious studies and PSHE, promoting cultural awareness, and students have access to an extensive programme of religious education and worship, including daily prayers, weekly Mass and a retreat programme.

**"Relationships between staff and students are strong; students told inspectors they view the school as a place of safety in which they are well cared for." Catholic School Inspection 2023**

Our exceptional pastoral team focus not only on students' academic achievement but their personal development, mental health and wellbeing too. We ensure every student is known, valued and celebrated as a unique individual within a supportive environment. In doing so, students are taught powerful life skills and values, including respect, integrity and empathy, inspiring them to make a positive impact on the world around them.

**"Students are happy, confident and feel valued by the school." Catholic School Inspection 2023**

The care and support we provide starts long before our students' first day in Year 7 as we believe it is essential to provide new starters with an enjoyable transition experience as they step up from primary to secondary school. Our transition programme has been exclusively designed to ensure we get to know each and every child joining La Sainte Union through a range of events and activities that run between March and September, and beyond.

## Sixth Form

La Sainte Union is part of the renowned and highly successful LaSWAP Sixth Form Consortium, along with neighbouring schools Parliament Hill School, William Ellis School and Acland Burghley School (see page 21).

Together, we can offer an array of A Level and vocational courses and enrichment opportunities, from extra-curricular activities, educational visits and career insights to volunteering, leadership roles and the Extended Project Qualification. Students' destinations are impressive as a result, with many securing places at Oxbridge and Russell Group universities.



# Maria Fidelis Catholic School FCJ\*

## School fact file

Maria Fidelis is a Roman Catholic co-educational school, rated good by both Ofsted and Westminster Diocese.

Brand new building with excellent facilities.

We are a smaller than average secondary school with a supportive, family atmosphere.

Consistently in line with national averages for GCSE in both progress and attainment measures.

Targeted programme for students from Year 7 identified as having higher learning potential; more able students are offered the opportunity to study Latin and triple science.

## Mission

Our school began serving the local Catholic community in 1830 under the direction of Marie Madeleine D'Houet, founder of the religious order, the Faithful Companions of Jesus (FCJ). The sisters are still involved in our school today, serving on our governing body and contributing to the spiritual life of the school.

Our vision is that FCJ schools are communities of personal and academic excellence. Strong in companionship, the unique giftedness of every person in these faith communities is recognised, nourished and celebrated. Our hope and expectation is that, through God's grace, working in us all, each young person grows into their best self, with zest for life and the generosity and confidence to use their talents and gifts in the service of others.

Our school is underpinned by our mission – growing together through Christ with courage, confidence and dignity.

## Curriculum

It is our expectation that the majority of students will follow a traditional, academic curriculum. The most able are identified early in Year 7 and are given the opportunity to study Latin. They are also mentored by graduates from Russell Group universities, who monitor their progress and coach them for higher education.

Students are organised into broad ability bands in Years 7 and 8, with increased setting in key subjects as they progress up the school. We are committed to encouraging creativity. Subjects such as drama, music and art are key aspects of the students' experience.



**Maria Fidelis**  
Catholic School FCJ

### Headmaster

Mr M. Anthony

### School address

1–39 Drummond Crescent,  
London NW1 1LY

T: 020 7387 3856

E: [office@mariafidelis.camden.sch.uk](mailto:office@mariafidelis.camden.sch.uk)

W: [www.mariafidelis.camden.sch.uk](http://www.mariafidelis.camden.sch.uk)

**Ages** 11 to 19

**DfE number** 202 / 4652

**Places available September 2026**  
150

### Open Evening

Wednesday 24 September 2025, 4 to 6pm

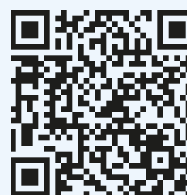
### Open Mornings

Every Tuesday from 9am to 10am during term time.

### Sixth Form Open Evening

Thursday 15 January 2026

### Camden School Report



\*FCJ - Faithful Companions of Jesus



"Maria Fidelis is a high-achieving school. The communication between parents and the school is great. I am really delighted with everything they have done for my child." Parent

## Bright futures

Our vision is that we are a community of personal and academic excellence where the unique giftedness of every person here is recognised, nourished and celebrated.

Our small size allows us to nurture each child as an individual, providing highly personalised support and challenge for all abilities. Our newly-built school is very centrally located and our students and staff reflect the diversity of the area. We are proud of our pastoral system, which ensures that students are known as individuals, and we work closely with other organisations to give the best support for students where needed. Progress is formally monitored three times a year and a rigorous intervention programme of support ensures students remain on target. The curriculum is differentiated to allow students of all abilities to be appropriately challenged and a substantial enrichment programme of after-school activities supports their holistic development. We are able to offer 'in house' instrumental lessons in trumpet and trombone and music technology via Camden Music.

## Experience for life

We understand that as well as academic success, a student's happiness depends on a breadth of experiences at school. We are committed to providing enrichment experiences for all our students and make regular use of the excellent local opportunities available to us, as well as offering national and international visits. These include: mentoring from City businesses such as Deloitte, a range of inspirational talks in partnership with Speakers for Schools, and opportunities to work with academics from leading scientific institutions, including the Crick Institute and the Wellcome Trust, as well as university departments. Our House system encourages students to develop their confidence and leadership skills through organising events, taking part in a range of challenging competitions and supporting younger members of the school community.



## Unique opportunities

- Over 80 trips throughout the year to support extracurricular learning
- Clubs ranging from debating to street dance, boxing to art club, police cadets to fencing
- Key Stage 4 and 5 students have the opportunity to be involved in The Duke of Edinburgh's Award scheme
- Trips to Oxford and Cambridge from Year 9
- Links with leading independent schools to provide further challenge and broaden students' experience.

## Sixth Form

Maria Fidelis has a thriving Sixth Form which meets the academic and pastoral needs of our young adults reflecting our underlying Catholic values.

These core values encourage all our students to reach their full potential, with support from our well-established pastoral team, academic mentors and tutorial programmes. We have excellent relationships with top universities including Oxford, Cambridge, LSE, UCL and Durham and a wide variety of leading professional City organisations.

Our comprehensive programme of support upholds our school ethos of aspiration and academic excellence. Carefully tailored and personalised work experience placements reflect this, and enable our students to meet their full potential. Placements have included: commercial firms such as Marks & Spencer, Zinc, Urban Partners, Eurostar; engineering and construction firms: Lendlease, Laing O'Rourke and Crossrail; and in the medical field, Bupa, Royal Free and University College Hospitals; in addition to social media organisations: the Guardian, Facebook and Google. Students are encouraged to lead community-based activities for our school as well as charities and voluntary organisations, supported through the RE curriculum and our Sixth Form student leadership team.



**"The school feels like one big family. Pupils are happy and and feel very safe. They enjoy lessons, work hard and behave well."**  
Ofsted 2021



# Parliament Hill School

## Parliament Hill School

### Headteacher

Sarah Creasey

### School address

Highgate Road, London, NW5 1RL

T: 020 7485 7077

E: [enquiries@parliamenthill.camden.sch.uk](mailto:enquiries@parliamenthill.camden.sch.uk)

W: [parliamenthill.camden.sch.uk](http://parliamenthill.camden.sch.uk)

Ages 11 to 19

DfE number 202 / 4166

Places available September 2026

180

### Open Evening

Thursday 25 September 2025,

5 to 7.30pm

### Open Mornings

1, 2 and 7 Oct 2025, 9 to 10.30am

### Sixth Form Open Evening

Thursday 27 November 2025, 4.30 to

7pm at William Ellis and Parliament Hill Schools (pre-registration is required – see the school website or [www.laswap.camden.sch.uk](http://www.laswap.camden.sch.uk))

### Camden School Report



## School fact file

In May 2024, Parliament Hill had a full Ofsted inspection and we're delighted that the overall effectiveness of the school was judged to be 'Outstanding'.

We have a strong track record of excellent academic outcomes. GCSE results are well above local and national averages.

Our Progress 8 score is well above average, placing us in the top 10% of schools nationally.

46% of grades were 9 – 7 top grades at GCSE (2024).

We offer a rich, creative and academic curriculum, greatly enhanced by a wealth of extracurricular opportunities.

Students speak highly of the first-rate care for their wellbeing, provided by staff and specialist partners. In 2024, OFSTED recognised that students are "exceptionally well supported".



## Mission

### 'High Achieving and Happy'

Our feminist mission is to enable every student to forge a strong identity, empowered to make their mark in the world.

We are proud to be a centre of excellence and innovation for girls' education.

We nurture aspirations and support each student to discover their dreams and ambitions.

We empower girls to take risks and to develop the confidence, leadership attributes, and cooperative relationships that enable them to flourish academically, socially and personally.

Students are educated to be inclusive global citizens, enabled to speak out and make a positive difference to the world now and in the future.

We believe that achievement and happiness are inextricably linked and we are committed to enabling both.

**Sarah Creasey (Headteacher)**

## Curriculum

Students at Parliament Hill have access to an inspiring, broad and balanced curriculum, which stimulates and engenders a passion for learning.

Our forward-thinking curriculum builds on students' achievements at Key Stage 2 and prepares them for post 16 and lifelong learning. There is a focus on developing excellent literacy and numeracy skills, as well as a keen emphasis on science, technology and mathematics. We have excellent specialist facilities to support learning in design, media and performing arts, as well as continually developing ICT and computer science facilities. Our teaching expertise extends across all subjects so students excel in science, languages and humanities as well as in creative areas.

## Bright futures

As a result of our broad and balanced curriculum students gain, on average, nine GCSEs. We are proud to be a high-achieving school with a strong record of student progress and attainment in a range of subjects, which compares very well with leading schools nationally. Many of our subject results and value-added scores are in the top five per cent for schools nationally.

The numbers of applicants going to university from our Sixth Form is above national averages, with over a quarter gaining places at Russell Group universities. Sixth Formers follow a tailored programme of higher education and careers advice and guidance.

## Experience for life

Students benefit from a wide range of extracurricular activities, including regular drama productions, dance shows and music concerts. We have clubs ranging from trampolining to technology, creative writing to cooking and climate action to dance, plus a variety of sports.

There are many visits to museums, theatres and galleries and a strong programme of residential and field trips, adventure challenges and outdoor sports, as well as the extremely popular Duke of Edinburgh's Award scheme. Debating is thriving, with many of our students competing passionately in the National Debate Mate Cup.

**"My daughter will leave Parliament Hill with an excellent rounded education and with tangible life skills that not many young people will have experienced."**  
Year 10 parent



## PARLIAMENT HILL SCHOOL



### Unique opportunities

As part of our commitment to raising students' aspirations and achievement, Parliament Hill School organises a full programme of work experience, mentoring, higher education visits, workshops and presentations in collaboration with our external partners, for example, Bennett architects, Deloitte, Camden Highline, the October Gallery, the British Library and prestigious universities such as Oxford, Cambridge, St George's Medical School, Imperial College, the Royal Veterinary College, London School of Economics and UCL.

There are many opportunities for students to have genuine leadership roles.

For example, girls can:

- co-plan lessons with teachers;
- research current educational issues;
- sit on a student interview panel;
- run mini-workshops as lead literacy learners;
- be elected to the Student Council;
- host visitors, including international guests;
- contribute to our student sustainability group.

Our outstanding pastoral provision includes therapeutic intervention through counselling and support for emotional wellbeing for students across the school. We have a designated wellbeing manager who coordinates provision across the school.

### LaSWAP Sixth Form

Parliament Hill School runs a very successful Sixth Form and is part of a long-standing partnership with our neighbouring boys' school William Ellis and local schools Acland Burghley and La Sainte Union. Together our four schools form the successful, well established LaSWAP Consortium, providing students with access to an extensive range of course options delivered by specialist teaching staff and complemented by excellent careers and higher education advice. We are proud of the success of our Sixth Form provision, confirmed by the high numbers of students who choose to stay with us at the end of Year 11, our exam results and the strong progression of students into prestigious universities and a wide range of careers.

### A Unique Setting for Inspired Learning

We are privileged to be situated on a stunning site on the edge of Hampstead Heath, offering a peaceful, secure environment where students thrive.

This natural setting enhances our commitment to providing rich, engaging, and dynamic learning experiences.

Our state-of-the-art Kite building, completed in the summer of 2019, stands as a symbol of high ambitions whilst having fun. As part of Camden's £30 million community investment programme, our facilities have been significantly upgraded, creating exciting new opportunities for extended learning.

The school is now home to a four-court sports hall, fully equipped science laboratories, computer science suites, a specialist design and technology space, a refurbished library, and a spacious dining hall. In addition, the extensive renovation of our Morant and Performing Arts buildings ensures that every area of the school supports creative, academic, and personal growth.

**"The dedication, support, warmth, humour and fantastic teaching of all the teachers that my girls have had at Parli is incredible and overwhelming. I hope the teachers all realise the impact they have had on these girls... it's outstanding." Year 11 parent**

# Regent High School

## School fact file

Nominated for 'Headteacher of the Year' award in the TES Awards 2025. Winner of a 2022 Silver Pearson National Teaching Award for 'Making a Difference: Secondary School of the Year'.

Nominated for the 'Secondary School of the Year' award in the TES Awards 2022.

Passport to the future: a flourishing Sixth Form with former students progressing on to Warwick, King's College London, UCL, Queen Mary, University of London, SOAS, Royal Holloway, University of London and Central Saint Martins.

Thriving partnerships: membership of the Kings' Cross Knowledge Quarter and partnerships with organisations including the Grimshaw Architects, The Francis Crick Institute, Central Saint Martins, The Roundhouse and the British Library.

Award-winning, state-of-the-art building: providing incredible facilities for the young people of Camden and beyond.



REGENT  
HIGH SCHOOL

### Headteacher

Gary Moore

### School address

Chalton Street, London, NW1 1RX

T: 020 7387 0126

E: [enquiries@regenthighschool.org.uk](mailto:enquiries@regenthighschool.org.uk)

W: [www.regenthighschool.org.uk](http://www.regenthighschool.org.uk)

Twitter: @RegentHighSch

**Ages** 11 to 19

**DfE number** 202 / 4196

**Places available September 2026**  
180

### Open Mornings

29 September to 3 October and 6 to 10 October 2025, starting at 9am.

### Sixth Form

Thursday 13 November 2025, 4 to 6pm.

### Camden School Report



## Welcome from our Headteacher

Welcome to Regent High School, a school where time is taken to get to know every child individually. Understanding our students' personalities, needs and passions is key to what we do, ensuring we can stretch capabilities, foster curious minds, develop talents and unlock potential.

Our nurturing and ambitious approach to education is underpinned by our school values of ambition, inspiration and opportunity. They steer our drive for academic excellence and a wider student experience that offers both the support and prospects for every student to develop into independent, confident and resilient adults, prepared for the demands of modern society.

I look forward to welcoming you and your family to Regent High School. Together we can support our students to achieve their very best.

**Gary Moore, Headteacher**



## REGENT HIGH SCHOOL

### Mission

#### Ambition / Inspiration / Opportunity

What ambition, inspiration and opportunity mean to us.

From the moment new students walk through our doors, they are emboldened by the culture of aspiration that defines the Regent High School experience.

Our culture fosters this sentiment by motivating us to provide inspirational experiences so that students can thrive at school and beyond.

By placing these values at the centre of all that we do, we fuel imaginations, stimulate minds, uncover talents and showcase the opportunities available in contemporary London.

As the first school member of the Knowledge Quarter, our many successful and varied partnerships with prestigious organisations prepare students for higher education, develop excellent employability skills and promote an

understanding of the global world of work.

Our Sixth Form also has an excellent track record of success. Former students have progressed on to higher education and into highly successful careers in medicine, law, teaching, journalism, architecture, finance and marketing.

Ofsted judged us to be Good once more when they inspected the school in February 2023. The inspectors noted that Regent High School is 'the curriculum is broad and often exceeds what is expected nationally'.

We are also a school who values enrichment both within and outside of the curriculum. As an active Artsmark school we create opportunities for students to develop skills and talents such as music, art, coding and debate just to name a few.

**"Pupils appreciate the rich range of visits and activities available to them."**

**Ofsted 2023**

**"Leaders consider what pupils have learned at primary school. They are ambitious in how they build on what pupils already know and can do." Ofsted 2023**



### Curriculum

At the core of our work is our commitment to students that we will support them to achieve high levels of academic success. Our teaching is defined by bespoke strategies that challenge every student to realise their potential, enabling them to become successful, engaged and independent learners.

Our dynamic and enthusiastic specialist teachers deliver an innovative and personalised curriculum, with a clear focus on achievement in the core subjects that supports students' learning across all areas.

Students experience cultural and creative learning within and beyond the classroom. This is mirrored by an extensive range of opportunities to learn in science, technology, engineering, arts and mathematics subjects. Our students therefore have a solid experience and understanding of all of the STEAM subjects, which represent some of the most vibrant study and employment sectors in London and internationally.

As a school dedicated to inclusivity, we have a proven track record of working with all of our SEND and EAL students and their parents/carers to make sure they fulfil their potential. We are also home to the physical disability Resource Base for Camden.

### Bright futures

Ensuring students are able to make informed decisions about their future is fundamental. Our Futures programme has been designed to play a pivotal role in our students' development. This is further enhanced by employer engagement opportunities in which students benefit from the opportunity to cultivate employability skills, gain a direct insight into career pathways, stimulate their independence and develop their career capital through real, hands-on experiences.

Progression on to higher education is excellent, with former students gaining places at King's College London; UCL; Goldsmiths, University of London; Queen Mary, University of London; Royal Holloway, University of London; SOAS, University of London; University of Nottingham; Warwick University; University of Sussex and Middlesex University. to study subjects ranging from Anthropology to Architecture, Criminology to Geography, and from Nursing to Psychology, among many others.

**"Pupils behave well and are proud to come here."**

**Ofsted 2023**

## Experience for life

Learning must extend beyond the classroom. Through a broad range of activities, we hope to provide our students with the social and cultural capital that will allow them to prosper in society.

We also believe that passionate people are inspired learners, which is why students are encouraged to take part in activities to supplement their studies. The breadth of our enrichment and Futures programmes allows for passions to be explored and skillsets expanded; whether it's sporting, creative or entrepreneurial, we really do have something for everyone (and if we don't, we listen to students' suggestions for further developing our extra-curricular programme). In addition, students in Years 12 and 13 are annually selected to be prefects, working alongside their elected counterparts on the School Council.

## Unique opportunities

We pride ourselves on providing a co-ordinated seven-year journey, beginning with our primary liaison and transition programme that ensures students are settled and supported. Our transition team endeavours to visit every one of our feeder primary schools each summer, gaining as much knowledge as possible about our newest students, answering questions and enthusing the Year 6 pupils about the exciting journey ahead of them.

Our pastoral system supports students throughout their time at Regent High School. All students have focused tutor time sessions each day and weekly PSHE lessons with their dedicated tutor. Each year group is led by a Head of Year, and our pastoral system enables us to build excellent relationships with all students, parents and carers.

Our central London location means we are a centre of innovation and enterprise, while our ever-growing network of partners continues to be a resource in which we take great pride. This means that we are able to provide unique, inspiring and unrivalled opportunities for our students, parents/carers and staff.

Working in partnership with parents and carers is key to the support we provide to students. This was recognised in the awarding of the Leading Parent Partnership Award for a fourth time in 2020.



## Sixth Form

We offer a rigorous Sixth Form journey.

Care and support are a vital element of a student's time at Regent Sixth Form. In our safe and nurturing environment, students are carefully guided from one key milestone to the next, supported to navigate their own individual pathways, take on positions of responsibility and be ready to leave us well prepared to embrace the opportunities that come

next. Our expanded curriculum teaches our Sixth Form students a wide range of academic and life skills, preparing them to take an active part in modern society. Whether it's university, an apprenticeship, work or a gap year, our team are experts in supporting students to achieve their ambitions.

**"Sixth-form students are positive role models for younger pupils and readily provide support for their peers."**

**Ofsted 2023**

**"My favourite thing about Regent High School is that the students and staff accept every student, no matter what. The school is very welcoming and teachers are always there if people need any support or advice. I'm very happy I chose to go to this secondary school." Year 7 student**

# The UCL Academy



## Principal

Andrea Pomphrey

## School address

Adelaide Road, London, NW3 3AQ

T: 020 7449 3080

E: [enquiries@uclacademy.co.uk](mailto:enquiries@uclacademy.co.uk)

W: [www.uclacademy.co.uk](http://www.uclacademy.co.uk)

**Ages** 11 to 18

**DfE number** 202 / 4000

## Year 7 places available

**September 2026** 192 (including places for Year 7 students with Art Aptitude)

## Year 7 Open Evening

Thursday 2 October, 4.30 to 6.30pm

(please register via the Academy website:

[www.uclacademy.co.uk](http://www.uclacademy.co.uk))

## Year 7 Open Mornings

11, 16 and 25 September, 9 to 10.30am

(please register via the Academy website:

[www.uclacademy.co.uk](http://www.uclacademy.co.uk))

## Sixth Form Open Evening

Thursday 6 November, 4.30 to 6.30pm

(please register via the Academy website:

[www.uclacademy.co.uk](http://www.uclacademy.co.uk))

## Camden School Report



## School fact file

Sponsored by one of the world's top-ranking universities, University College London (UCL).

Strong learning culture with excellent, inspiring and imaginative teaching across the curriculum.

Emphasis on the education of the 'whole person' with specialist areas of Science, Engineering, Mathematics, Visual Arts and Languages.

Year 7 places available in 2026/27 for students with an aptitude for the visual arts.

## Introduction from the Principal

The UCL Academy is sponsored by UCL, one of the world's leading universities, with specialisms in Science, Technology, Engineering, Arts and Maths (STEAM). We are a centre of learning and a hub for the local community. UCL is a university founded to ensure access to education for all and was the first university in England to admit women. The UCL Academy therefore welcomes and supports students from all walks of life and is not a selective school.

We have worked with our sponsor to build an inspiring school which supports young women and young men to develop as individuals and to set and achieve high targets for themselves. Our students learn in state of the art facilities opened in 2012, which include a Science demonstration theatre, sports hall, an indoor and outdoor gym and a dance studio.

We are delighted to be offering Year 7 places for students with an aptitude for the Visual Arts from. These students will be supported with an exciting and innovative programme of study both internally and externally through our UCL links. Please visit our website for more information; the deadline for applications is Tuesday 30th September 2025.

The UCL Academy provides its students with an education that prepares them for global citizenship by:

- Supporting students to achieve 17 key experiences and opportunities by the age of 17 as part of our 17x17 programme
- Putting emphasis on both independent and collaborative learning, student choice and programmes of study which are tailored to individual interests, aspirations and progress
- Challenging the most able to strive for academic excellence and support all learners to fulfil their true potential as a young learner
- Giving each student mentoring support to ensure they make positive decisions about their academic career.

Thank you for your interest in The UCL Academy.

**Andrea Pomphrey, Principal**

## Mission

The UCL Academy is an exciting and inspiring place to learn, with high quality teaching and outstanding facilities. We offer:

- A strong and innovative learning environment with excellent, creative and imaginative teaching across the curriculum.
- Opportunities for learners to make fully informed choices about their future direction.
- Teaching that challenges the most able to strive for academic excellence and supports all learners to fulfil their true potential as a young learner.
- A strong commitment to mentoring by staff, students and UCL undergraduates to ensure that every student is supported to achieve and thrive as an individual.
- A safe, positive learning environment.
- Access to the resources and expertise of our renowned university sponsor.

A major feature of The UCL Academy is '**education for global citizenship**'. We are committed to preparing students for the intellectual, social and personal challenges of their future lives and careers. Our curriculum and ethos shape students' understanding of their social responsibilities and what it means to be a global citizen. Students benefit from enhanced autonomy in curriculum choice and a wide variety of opportunities to determine what they study. In return, they are expected to maintain high standards of work and behaviour. Our self-directed curriculum engages students in a broad range of extracurricular activities.



## Connected Curriculum

We offer a broad **Connected Curriculum**, every student studying at least one modern foreign language. Our curriculum and teaching are stimulating and innovative, and enriched by our links with our prestigious sponsor, UCL. This, combined with an emphasis on high standards and behaviour, results in strong academic progress and attainment.

In their first year at the academy, the Year 7 students develop effective learning skills and identify their targets for future progress. As they progress through to Year 10, students are given a broad range of options for their GCSEs with expert guidance every step of the way.

## Bright futures

- Curriculum specialisms – Science, Technology, Engineering, Art and Maths (STEAM) and Modern Foreign Languages.
- English, the Connected Curriculum, and our education of the whole child, are recognised as areas of excellence.
- Humanities, Performing Arts and Sport are vital aspects of the students' education. Our orchestra, choir, termly Drama performances and broad programme of sporting fixtures and clubs for elite and inclusive physical activities support students of all abilities, interests and backgrounds.
- High-quality facilities and connections to UCL's ethic of excellence with high academic standards.
- Outstanding provision with input from university academics.



## Technology

Technology has enriched the learning environment at the Academy in a myriad of ways. As well as providing teachers with more efficient ways of tracking the achievements of each and every student, it has given **all** students the greatest ever opportunity to excel in their education. The software we employ for study in the classroom and at home, which includes the use of AI Technology, is further enhanced by our excellent facilities; our Computer Science, Engineering and Physics faculties have at their disposal some of the most innovative technology being used in secondary schools. As the requirement to use computers on a deeper level continues to rise in many job sectors, we will continue to utilise and expand the technology that gives our students the most relevant tools to enter and succeed in further education and employment.

**"UCL is one of the top universities in the UK. Sponsorship of an Academy allows us to provide access to new ways of learning for students and expose them to life at university, supporting students of all ability levels to higher levels of attainment and enthusiasm for further study."**  
**Sponsor, University College London**

**"Pupils feel safe at school. They have a trusted adult to turn to if they have any worries." Ofsted 2024**

### Experience for life

- In 2018/19, the Academy launched the Critchley Scholars Programme for girls. Supported by Elizabeth Critchley, a UCL alumnus, this academic scholarship programme aims to **inspire and challenge** girls to achieve the highest academic excellence and prepare them for career success.
- Developing aptitude in specialisms: **Building confidence in STEAM** subjects and encouraging students to think independently.
- Internationalism: A focus on Modern Foreign Languages and the advantages/opportunities this may bring, including international trips and long-term career benefits.
- Working with external organisations: This prepares students for further education and the workplace. Our links with UCL bring many advantages, for example, visits to UCL, UCL student mentors for Year 8 and Sixth Form, Academy students, and guest UCL lecturers all contribute to raising aspirations and preparing students for life at university.
- Location: The Academy's central location offers students additional opportunities and experiences to raise aspirations, such as visits to local areas of educational interest and regular engagement with UCL.
- Careers advice and guidance: A range of enrichment opportunities designed to give students confidence in their own abilities and to provide them with the kinds of experience that employers and university admissions tutors will really value. The Academy's 17x17 programme works with students to help

them achieve 17 core experiences and opportunities by the age of 17 ready for the next stage of their lives. It focuses on readiness for the university admissions process and ensuring students have the skills and knowledge that will appeal to all future employers. It is central to our ethos of educating the whole child and our commitment to ensure that students at the Academy strive for academic excellence, through a connected curriculum that supports our students to become global citizens.

### Unique opportunities

- Year 7 students with an aptitude for the Visual Arts will undertake an exciting and innovative programme of study both internally and externally through our UCL links.
- Students take early responsibility for their learning through a comprehensive extra curricular program of activities and opportunities.
- We support students to gain qualifications – but their successes in art, cultural activities, sport, music and community service are also celebrated.
- PE plays a vital role in the Academy, with a sports hall, an indoor and outdoor gym and a dance studio on site. Students have the opportunity to be part of the Sport Development Programme in Football and Basketball. For more information, please see the Sport section of the website.
- The Academy has state-of-the-art facilities for the teaching of STEAM subjects. This includes a science demonstration theatre which allows UCL academics and Academy staff to stage interactive experiments.

- Students have 'encounters with excellence' built into their educational experience. From their very first day, students at the Academy are exposed to and experience excellence throughout their school life. Whether it be a day at UCL IOE's Bloomsbury campus, trips and visits to partnerships across all our subject faculties, London's leading cultural highlights, or working with exceptional organisations in the fields of the performing arts, sport and STEAM, students at the Academy will be inspired to achieve excellence in whatever field of study they choose to take.
- The Academy's Chair of Governors is Kathy Armour, UCL Vice Provost (Education & Student Experience). Kathy is dedicated to ensuring the UCL Curriculum is consistently relevant, achieved through continuous dialogue with academic colleagues and professional services, alongside significant emphasis on student feedback. As a specialist in her area of expertise, the UCL Vice Provost is an inspiring role model for all students.
- As a STEAM specialist school, the annual Camden STEAM Fest gives students the opportunity to both showcase their research and learn more about careers in science from senior professionals, including events designed to get more girls into science.

### Sixth Form

Our Sixth Form has historically specialised in Science, Engineering and Maths and we have now developed excellent Arts and Humanities departments. This offers all students a broad academic experience. We have an aspirational ethos and high expectations, matched by excellent pastoral care and an inclusive atmosphere. Grades are important but so is leaving Sixth Form as a well-rounded and confident person.

We offer Post-16 students a **distinctive and stimulating curriculum**, complemented and enriched by an international perspective on their studies. Teaching is enriched by contributions from UCL's academics and students also benefit from access to the university's facilities. Since opening, an average of forty percent of our Sixth Form students have been offered places at Russell Group universities. We are also proud of our student-led societies and the opportunities for leadership and volunteering that Sixth Formers have here.

**"This is an inclusive and welcoming school. The school has high aspirations for pupils' academic achievement, including pupils with special educational needs and/or disabilities (SEND). The ambitious curriculum is broad and balanced. Overall, pupils achieve well in public examinations, especially in English and mathematics, and staff are appreciative of the positive culture instilled by new leaders." Ofsted 2024**

# William Ellis School

## School fact file

We embody the best of boys' education in the 21st century, nurturing successful students and good citizens through strong relationships, with a 160 year commitment to ensuring that every student achieves their full potential.

Ofsted 2024: "Pupils enjoy coming to this school. It provides them with a sense of community where difference is accepted and equality valued." They judged the school to be good in all areas.

**Holistic personal development:** intellectual, physical, social and emotional. We recognise the opportunities and challenges of being a young man in a changing world and guide students through this journey.

Our residential facility in the Surrey Hills provides activity camps and study trips. Our commitment to creative arts and student leadership ensures school life captures our motto, "rather of use than fame".

## Dear families

We are a distinctive, dynamic, diverse school, where every boy is known, supported and cared for as an individual. We emphasise respect for others and the responsibilities we have within and beyond our community.

We are a school where students:

- have ambition, work hard and make excellent progress
- feel supported, welcomed and respected for their individuality
- are prepared to be responsible, global citizens in a democratic society
- possess an informed understanding of the world of work and how wealth

is created, with an awareness of ethical behaviour, respect for the environment and social justice

- cultivate creative skills and an appreciation of art, music and drama
- develop an interest in the wider world and other cultures
- have pride in their school and have high expectations for themselves and their peers.



### Headteacher

Izzy Jones

### School address

Highgate Road, London, NW5 1RN

T: 020 7267 9346

E: [info@williamellis.camden.sch.uk](mailto:info@williamellis.camden.sch.uk)

W: [williamellis.camden.sch.uk](http://williamellis.camden.sch.uk)

**Ages** 11 to 19

**DfE number** 202 / 4688

### Places available September 2026

112 (including up to 10% of places for students with an aptitude for Music)

### Open evening

Thursday 25 September 2025, 6 to 8pm

### Meet the Head

17 September, 1 October and 15 October, 4pm to 5pm

### Open mornings

10 and 24 September, 8 and 22 October, 9 to 10.30am

### Music Place Applications

Applications to be submitted by 4pm, Tuesday 7 October. Music Aptitude Test 3.30pm on Thursday 9 October

### Sixth Form evening

27 November 2025, 4.30 to 7pm at William Ellis and Parliament Hill Schools (pre-registration is required – see the school website or [www.laswap.camden.sch.uk](http://www.laswap.camden.sch.uk))

### Camden School Report



**"I applaud the ambition of the curriculum, and the ambition of creating well-rounded boys through the outward-bound nature of the school."**  
Parent, school survey 2022



**"William Ellis School has been a transformational experience for our son and for our family as a whole. From the first day, it was clear that teachers are deeply committed to education and get to know the students well, truly caring for their development."**  
Quote from a parent, 2024

### **Nurturing successful students and good global citizens**

All boys follow a curriculum with a strong academic core, with options to explore different pathways reflecting their aptitudes and ambitions as they progress through the year groups.

We maintain flexibility, challenge and breadth. Our carefully designed non-examined curriculum includes PSHE and Careers Education to support the personal development of our boys in Years 7 to 11, and all students in Years 12 and 13. We offer a range of science courses and triple science is a popular choice. We consider languages to be

a crucial part of the curriculum and as such, most boys will study one foreign language to GCSE with some studying two. This academic profile continues into our A Level offer within LaSWAP. From Year 10 upwards, we offer vocational courses including Applied Science, Art and Catering.

### **Bringing out the best in boys**

Our committed and highly-qualified teachers are experienced in bringing the best out in boys. We believe that boys achieve their full potential if they enjoy their work and find it stimulating and challenging. Courses are designed to assist each boy to achieve his personal best in terms of progress and academic achievement. Our Outdoor Education programme, an entitlement for all students, supports their growing independence and ability to work co-operatively with others.

We prepare our students for later life by developing independent learning skills and by exploring important issues through our comprehensive personal development programme, recognised by local awards and in the national media.

**"I like the inclusivity and the sense that each child is well known and valued."**  
Parent, school survey 2022

The house system provides more opportunities for student leadership. The five houses complement the pastoral care provided by our Pastoral Leaders and personal tutors in small tutor groups. The School Council, made up of elected student representatives, is influential in decisions about curriculum and use of resources and how the school's ethos is represented.

There are several strands to our Careers Education programme which is fully integrated into the curriculum for every year group. Future First, the national alumni network for state schools (founded by William Ellis students) provide workshops and other projects and opportunities with local and national businesses. All Year 10 boys have work experience and many attend university open days.

## Building successful citizens

We want every boy to have the best transition to secondary school possible, and have a unique transition programme that is well regarded by parents and our local primary schools. In Year 6 each student hosts a William Ellis staff member in their primary school, and the transition programme for families supports the whole family on this important journey.

Outdoor learning is central to building strong relationships at William Ellis School. The Mill, our residential centre, set in 10 acres of the Surrey Hills, enables outward-bound activities, Duke of Edinburgh Award training and study trips. All students participate in residential camps as part of our curriculum and we have a designated 'Head of Adventure' at the school. This helps our students to develop the attributes of successful students and good citizens.

Music has a special place in our school's culture, with a large number of visiting specialist teachers providing extra-curricular enrichment.

Applications from boys with an interest in music are encouraged: up to 10% of places go to boys who demonstrate musical aptitude. Students' confidence and skills are developed through workshops and performances with organisations ranging from the Royal Academy of Music to the London Jazz Festival.

We foster participation and healthy competition through curricular and extracurricular sport, especially basketball and table tennis, and partnership with Arsenal Football Club. We encourage a variety of sports: rugby, football, athletics, cricket, tennis, badminton, basketball, crosscountry, running, table tennis and volleyball.

We provide a wide range of extracurricular opportunities and enrichment activities, particularly in music, dance, drama and sport, and residential language and culture exchange trips. Such activities develop leadership and team working skills and characteristics such as resilience, creativity and resourcefulness. The school makes full use of its proximity to Hampstead Heath and to central London to facilitate these opportunities.



## Sixth Form

We run a highly successful, coeducational Sixth Form with our neighbouring girls' school, Parliament Hill, housed in a new shared Sixth Form centre. Our joint Sixth Form is part of the well-established LaSWAP consortium that also includes La Sainte Union and Acland Burghley schools. All four schools work together to provide students with access to an extensive range of course options delivered by specialist teaching

staff and complemented by excellent careers and higher education advice, as well as an enrichment programme. We are proud of the success of our Sixth Form provision, confirmed by the high numbers of students who choose to stay with us at the end of Year 11, our exam results and the strong progression of students into prestigious universities including Oxford and Cambridge and work-based learning paths including prestigious degree apprenticeships.

**"We consider ourselves very lucky that our son attends a school that takes such a proactive approach in respect of pupils' wellbeing. I know that this is not replicated in many other schools."**  
**Quote from a parent, 2024.**



# Allocation of places in 2024 and 2025

The allocation of places for admission to Camden secondary schools for the previous two years are provided here. The table below details the cut off distances (measured in miles) beyond which applicants were initially not admitted when the offers were published in March 2024 and March 2025.

School	2025 (distances)	2024 (distances)
Acland Burghley School	0.85	0.93
Camden School for Girls Band A:	0.98	0.95
Band B:	0.69	0.91
Band C:	0.83	0.49
Band D:	0.42	0.36
Hampstead School	n/a	n/a
Haverstock School	n/a	n/a
La Sainte Union Catholic School	n/a	n/a
Maria Fidelis School FCJ	n/a	n/a
Parliament Hill School	1.15	1.14
Regent High School	n/a	1.49
UCL Academy	n/a	n/a
William Ellis School	n/a	n/a

n/a - These schools had vacant places when the offers were published.

Please remember that these are only guidelines and the final decision whether to make an application rests with the parent. You can check how far you live from a Camden school by visiting [schoolsearch.camden.gov.uk/schools](https://schoolsearch.camden.gov.uk/schools).

The table below details the number of places offered under the remaining criteria for the previous two years at the time offers were published.

School	No. places in 2025	Number of applications		Looked after children		EHCP allocations		Siblings		Social/medical	
		2025	2024	2025	2024	2025	2024	2025	2024	2025	2024
Acland Burghley School	178	654	593	0	3	2	12	52	40	0	0
Camden School for Girls	120	587	581	0	6	4	1	24	22	1	0
Hampstead School	210	406	431	0	1	2	0	43	39	0	1
Haverstock School	135	310	311	0	1	3	1	30	28	1	0
La Sainte Union	120	132	180	1	0	1	1	*	*	*	0
Maria Fidelis	150	274	358	0	0	3	5	*	*	*	5
Parliament Hill	180	698	663	1	2	4	6	29	21	4	3
Regent High	180	310	379	0	0	5	20	44	43	2	1
UCL Academy	192	503	512	0	0	0	4	35	35	1	0
William Ellis	112	270	313	0	0	0	2	22	14	2	5

\* Please contact the school directly for this information

# Other local authority contact details

## **Barnet Council**

2 Bristol Avenue, Colindale, NW9 4EW  
Telephone: 020 8359 7651  
E: [school.admissions@barnet.gov.uk](mailto:school.admissions@barnet.gov.uk)  
[barnet.gov.uk](http://barnet.gov.uk)

## **Brent Council**

Brent Civic Centre, Engineers Way  
Wembley HA9 0FJ  
Telephone: 020 8937 3110  
E: [school.admissions@brent.gov.uk](mailto:school.admissions@brent.gov.uk)  
[brent.gov.uk](http://brent.gov.uk)

## **Ealing Council**

Perceval House, 14-16 Uxbridge Road  
Ealing, London W5 2HL  
Telephone: 020 8825 5511  
E: [mainroundadmissions@ealing.gov.uk](mailto:mainroundadmissions@ealing.gov.uk)  
[ealing.gov.uk](http://ealing.gov.uk)

## **Enfield Council**

Civic Centre, Silver Street  
Enfield EN1 3XA  
Telephone: 020 8379 5501  
E: [esas@enfield.gov.uk](mailto:esas@enfield.gov.uk)  
[enfield.gov.uk](http://enfield.gov.uk)

## **Hackney Education**

Hackney Service Centre  
1 Hillman Street, London E8 1DY  
Telephone: 020 8820 7000 (option 3)  
E: [secondary.transfer@hackney.gov.uk](mailto:secondary.transfer@hackney.gov.uk)  
[education.hackney.gov.uk](http://education.hackney.gov.uk)

## **Hammersmith and Fulham Council**

Admissions Team, 3rd Floor, 145 King Street, Hammersmith, London W6 9XY  
Telephone: 020 8753 1085  
E: [school.admissions@lbhf.gov.uk](mailto:school.admissions@lbhf.gov.uk)  
[lbhf.gov.uk](http://lbhf.gov.uk)

## **Haringey Council**

Haringey Admissions Service  
5th Floor, 48 Station Road  
Wood Green, N22 7TY  
Telephone: 020 8489 1000  
E: [schooladmissions@haringey.gov.uk](mailto:schooladmissions@haringey.gov.uk)  
[haringey.gov.uk](http://haringey.gov.uk)

## **Islington Council**

222 Upper Street, London N1 1XR  
Telephone: 020 7527 5515  
E: [admissions@islington.gov.uk](mailto:admissions@islington.gov.uk)  
[islington.gov.uk](http://islington.gov.uk)

## **Kensington and Chelsea Council**

Kensington Town Hall, Hornton Street  
London W8 7NX  
Telephone: 020 7745 6432  
E: [school.admissions@rbkc.gov.uk](mailto:school.admissions@rbkc.gov.uk)  
[rbkc.gov.uk](http://rbkc.gov.uk)

## **Lambeth Council**

Lambeth Civic Centre  
6 Brixton Hill, London, SW2 1EG  
Telephone: 020 7926 9503  
E: [schooladmissions@lambeth.gov.uk](mailto:schooladmissions@lambeth.gov.uk)  
[lambeth.gov.uk](http://lambeth.gov.uk)

## **Lewisham Council**

2nd Floor, Laurence House  
Catford Road, London SE6 4RU  
Telephone: 020 8314 8282  
E: [secondaryadmissions@lewisham.gov.uk](mailto:secondaryadmissions@lewisham.gov.uk)  
[lewisham.gov.uk](http://lewisham.gov.uk)

## **Southwark Council**

PO Box 64529  
London SE1P 5LX  
Telephone: 020 7525 5337  
E: [schools.admissions@southwark.gov.uk](mailto:schools.admissions@southwark.gov.uk)  
[southwark.gov.uk](http://southwark.gov.uk)

## **Tower Hamlets Council**

Tower Hamlets Town Hall  
160 Whitechapel Road  
London E1 1BJ  
Telephone: 020 7364 5006  
E: [school.admissions@towerhamlets.gov.uk](mailto:school.admissions@towerhamlets.gov.uk)  
[towerhamlets.gov.uk](http://towerhamlets.gov.uk)

## **Wandsworth Council**

Town Hall, Wandsworth High Street  
London SW18 2PU  
Telephone: 020 8871 7316  
E: [admissions@wandsworth.gov.uk](mailto:admissions@wandsworth.gov.uk)  
[wandsworth.gov.uk](http://wandsworth.gov.uk)

## **Westminster Council**

Hornton Street, London W8 7NX  
Telephone: 020 7745 6433  
E: [schooladmissions@westminster.gov.uk](mailto:schooladmissions@westminster.gov.uk)  
[westminster.gov.uk](http://westminster.gov.uk)

## Useful contacts

### **Department for Education**

Sanctuary Buildings, 20 Great Smith Street  
London SW1P 3BT  
Telephone: 0370 000 2288  
[gov.uk/dfe](http://gov.uk/dfe)

### **Ofsted**

Piccadilly Gate, Store Street  
Manchester M1 2WD  
Telephone: 0300 123 1231  
E: [enquiries@ofsted.gov.uk](mailto:enquiries@ofsted.gov.uk)  
[ofsted.gov.uk](http://ofsted.gov.uk)

### **Independent Schools Council**

First Floor, 27 Queen Anne's Gate  
London SW1H 9BU  
Telephone: 020 7766 7070  
[isc.co.uk](http://isc.co.uk)

### **Local Government and Social Care Ombudsman**

PO Box 4771, Coventry CV4 0EH  
Telephone: 0300 061 0614  
[lgo.org.uk](http://lgo.org.uk)

### **The Office of the Schools Adjudicator**

Bishopsgate House, Feethams  
Darlington DL1 5QE  
E: [osa.team@schooladjudicator.gov.uk](mailto:osa.team@schooladjudicator.gov.uk)  
[education.gov.uk/schoolsadjudicator](http://education.gov.uk/schoolsadjudicator)

# Frequently asked questions about secondary schools

## Does the co-ordinated admissions scheme improve my chances of getting a place at my preferred school?

Not necessarily. Camden schools are extremely popular and there are usually more applications than places available. Camden Council can only offer places up to the schools' published admissions number. Therefore you are advised to be realistic when choosing your preferences to have the best chance of securing a school place.

## Do the Key Stage 2 test results for my child affect their chance of securing a school place?

The Key Stage 2 test results do not form part of the admissions criteria for any of Camden's community, voluntary aided schools or UCL Academy, so your child's results will not be considered.

## Who determines a school's admissions criteria?

Camden Council determines the admissions criteria to be used when deciding who will be offered a place at any oversubscribed Camden community school and the voluntary aided schools have their own board of governors who decide their criteria. Each year a statutory consultation process takes place before the admissions criteria are determined.

## Will my child receive support from an education psychologist if needed?

Educational psychologists provide specialist advice to support schools, colleges and early years providers to identify, assess and meet the needs of children and young people with special educational needs and disabilities (SEND) aged 0 to 25. We address concerns about developmental, behavioural, emotional and mental health needs, including those with the most complex needs. We draw on psychological theory and research to inform our practice. We work with parents and carers, teachers and other professionals to support children and young people. Referrals are made by a school's SENDCo or by staff in a college or early years setting.

## Who should I speak to about my child's attendance at school?

The Attendance and Children Out of School (ACOS) team works with schools to ensure children attend school and offers help and advice where appropriate. Parents should contact their child's school first to discuss any attendance concerns. ACOS can be contacted on 020 7974 7162.

## How will I find out about my child's progress?

Schools maintain a progress record for each child and these are available for parents to see. Arrangements are usually made for parents to discuss the record each year with their child's teachers. When children transfer to secondary school, the record is passed on to the new school.

## Is my child entitled to claim free school meals?

Once your child has a full-time school place you can apply for free school meals for them if you receive the following:

- Income support
- Income-based jobseeker's allowance
- Income-based employment and support allowance
- Universal credit with taxable income of less than £7,400 per annum
- Child Tax Credit with a taxable income of no more than £16,190 and not in receipt of Working Tax Credit\*
- The guaranteed element of state pension credit
- Support from the National Asylum Support Service (NASS).

\*Special circumstances: if receiving Working Tax Credit (WTC) you will not be entitled to free school meals unless you are still getting WTC because you have stopped work in the last four weeks; or reduced your hours to fewer than 16 in the last four weeks.

Young people in receipt of income support and income based jobseeker's allowance in their own right are also entitled to free school meals.

**If you think your child is entitled to free school meals, it is very important that you apply for them even if your child eats a packed lunch. This is because the school receives extra funding from central government for every child eligible for free school meals.**

**Please contact your child's current school for more details or Camden's Free School Meals service on 020 7974 5771. To apply for free school meals please complete the online application form available from the Camden website, [www.camden.gov.uk/fsm](http://www.camden.gov.uk/fsm)**

## Don't let your child miss out – every school day counts

Attending regularly is important for your child's happiness and success in school. We know that pupils with good school attendance – of 95% or more – are far more likely to achieve well in their primary school tests at age 11 and go on to gain good passes in their GCSEs at age 16.

Every day your child is not in school means that they are less likely than their classmates to do well in school.

We know that most parents and carers make sure their children attend regularly. Please support your child to go to school regularly. If you need help or advice, please speak to your child's school.

### Is my child entitled to free school travel?

Children aged 11 to 18 can get free and discounted travel on all London transport services with a Zip Oyster photocard. To find out more and apply, visit [tfl.gov.uk/fares/free-and-discounted-travel](https://tfl.gov.uk/fares/free-and-discounted-travel).

If you choose to send your child to a school further away when there is a school place nearer to your home, you must pay any travel costs incurred. If you think your child might have a serious medical, social or other reason why they would need transport to and from school, you should ask for your case to be given special consideration. If you think your child might have a right to free travel, or if you would like a copy of the policy, you should email [admissions@camden.gov.uk](mailto:admissions@camden.gov.uk) or telephone the Camden Admissions Team on **020 7974 1625**.

### Is there any other financial support for my child that I could apply for?

Parents should note that due to changes to funding arrangements, Camden Council is unable to provide clothing grants for school students or 16 to 19 maintenance grants for either school or college students. Post-16 students can contact their school or college for information about any available financial assistance. If you are in receipt of benefits, please seek further advice on financial assistance from the agency providing the benefits or contact Camden's Welfare Rights and Benefits Advice Centres. For information on how to contact these centres visit your local library or [camden.gov.uk](https://camden.gov.uk). You can also find a list of charities that may consider applications for help in buying a school uniform on the Camden Council website.

### Will I need to buy any text books for my child?

Camden Council provides all books required for the curriculum, via the secondary schools.

### Is there any other help with the cost of living?

You can find a range of help, advice and support for families who may be struggling during the current cost of living crisis at [camden.gov.uk/costofliving](https://camden.gov.uk/costofliving)



# List of educational terms

## Academies

Academies are state schools which receive their funding directly from the Government, rather than via the local authority. They are run by an academy trust. Visit [gov.uk/types-of-school/academies](http://gov.uk/types-of-school/academies) to find out more.

## Admissions criteria

The conditions set by the local authority for community schools, or the governing body for voluntary aided schools and academies that are used to decide who has priority for a place.

## A Level

Advanced Level General Certificate of Education, a two-year course usually taken at the age of 17 to 18.

## AS Level

Advanced Subsidiary General Certificate of Education, qualifications in their own right that will no longer contribute to A Levels.

## BTEC

Vocational qualifications, providing a practical approach to learning, with skills development and theoretical knowledge.

## Community schools

Built, maintained and staffed by the local authority, which is also responsible for admitting pupils.

## Common Application Form

The form that you complete to make your application. This can be done online at [www.eadmissions.org.uk](http://www.eadmissions.org.uk) or via a paper application obtained from the local authority of the borough in which you live and to whom you pay your Council Tax.

## DfE

Department for Education, responsible for education and children's services.

## English Baccalaureate (Ebacc)

Recognises where students have achieved five or more 5 to 9 grades (formerly A\* to C) in traditional academic GCSE subjects: English, mathematics, sciences, a language and a humanities subject.

## Free School

These are all-ability state schools set up independently from the local authority with the agreement of the government. Visit [gov.uk/types-of-school/free-schools](http://gov.uk/types-of-school/free-schools) to find out more.

## GCSE

General Certificate of Secondary Education, the main academic qualifications taken by 14 to 16 year-olds. GCSEs have been reformed and a new grading scale of 9 to 1 has been introduced, with 9 being the top grade. See [gov.uk](http://gov.uk) for more information.

## Independent schools

Funded by fees paid by parents and income from investments, and responsible for setting their own curriculum and admissions policies.

## Key Stage 3

The national curriculum taught during the first three years of secondary school, when students are aged 11 to 14.

## Key Stage 4

The national curriculum incorporating GCSEs and other examinations, taught in Years 10 and 11 of secondary schools, when students are aged 14 to 16.

## Local authority

The Council that is responsible for education in each area.

## Children looked after criteria

A child who is, or has previously been, in the care of a local authority, either in foster care or a children's home, or a previously looked-after child who was adopted or subject to a child arrangement order or special guardianship order immediately following having been looked-after. This also includes previously looked after children who were in state care outside of England and ceased to be in state care as a result of being adopted.

## National Curriculum

State secondary schools have to teach the following core subjects at Key Stage 3: English, mathematics, science, design and technology, computing, history, geography, modern foreign languages, art and design, music, citizenship, PE, RE and PSHE. Academies have greater freedom to design their curriculum but must include English, mathematics, science and RE. A new national curriculum was introduced in September 2014.

## Ofsted

Office for Standards in Education, Children's Services and Skills. This is the independent government department responsible for inspecting schools and regulating services which care for children and young people and provide education and skills for learners of all ages.

## Oversubscribed

When the number of applications for a school exceeds the number of places available.

## Pan-London Scheme

A co-ordinated admissions scheme that allows the transfer of admissions applications between boroughs.

## Parent

In this booklet the term parent includes carers and legal guardians.

## Pastoral care

Arrangements for the welfare of individual pupils and the provision of the support which fosters all aspects of student learning and achievement.

## Preference

A school named by the parents that they would like their child to attend. It is not always possible to meet parental preference.

### Published Admissions Number

The number of children that a school will admit for a particular year group.

### Special educational needs and disabilities (SEND)

Children and young people who require extra help and support with their learning due to their special educational needs and / or disabilities.

#### Subjects:

- ICT – information and communications technology
- PE – physical education
- RE – religious education
- PSHE – personal, social and health education
- STEAM – science, technology, engineering, arts and maths.

### Voluntary aided school

A school owned and run by trustees (usually a religious body) and funded by the local authority. The governors are responsible for the provision of the premises, the maintenance of the school and the appointment and dismissal of staff. Voluntary aided schools are also responsible for their own admissions. However, parents still need to fill in a Camden common application form listing all schools they are applying for and, if an offer is received, it will come from the council. Some voluntary aided schools require parents to complete a supplementary form as well as the common application form.

### Waiting list

The list held, for an oversubscribed school, of the children who did not get a place. As places become available, children are offered a place from the top of this list. The waiting list is held in order of the admissions criteria.

### Work experience

A well-established programme where students in Years 10 to 11 spend a week or two weeks in a work environment.

## 14 to 19 education

### University Technical Colleges (UTCs)

Technical academies for 14 to 19 year-olds. UTCs have university and employer sponsors and combine practical and academic studies. They specialise in subjects that need technical, industry-standard equipment – such as engineering and construction – which are taught alongside business skills and ICT.

For further information, details of colleges in the London area and how to apply, please visit [utcolleges.org](http://utcolleges.org)

### Studio Schools

Schools for 14 to 19 year-olds, backed by local businesses and employers. They often have a specialism but focus on equipping young people with a wide range of job-related skills and core academic qualifications, run in a practical and project-based way.

### FE College

College for further education which offers provision for students aged 16 to 19 and some aged 14 to 16. Capital City College is Camden's only FE college.

Visit [capitalccg.ac.uk](http://capitalccg.ac.uk)

**This booklet is correct at time of going to press: August 2025.**

# Camden secondary schools' open events 2025

Parents and carers can find out more about Camden secondary schools and how to apply at school open events this autumn term.

These are a great way to find out more about the schools before applying. You can see all the dates and times on page 5 of this booklet or download a poster at **[camden.gov.uk/admissions](https://camden.gov.uk/admissions)** (scan the QR code below).

These dates and times were correct at the time of this booklet going to print but please check the schools' websites and the Council's website for the latest details.



Find out more  
and apply online  
by scanning the  
QR code.



**Camden schools:**  
**Bright futures**



**DO YOU KNOW  
SOMEONE WHO HAS  
USED A FALSE ADDRESS TO  
GET A SCHOOL PLACE?**

You do not need to tell us who you are. Please give us as much information as possible so that we can investigate the matter fully. If we find that a school place was obtained using a false address we will withdraw our offer and give it to the child who was entitled to the place. In such cases, we will withdraw our offer even after the child has started school.

You can report this to us confidentially  
via email: **[admissions@camden.gov.uk](mailto:admissions@camden.gov.uk)**

**Email: [admissions@camden.gov.uk](mailto:admissions@camden.gov.uk)**  
**Website: [camden.gov.uk/admissions](https://camden.gov.uk/admissions)**

