



Appendix 4

Open Spaces

Detailed Maps of Key Open Spaces

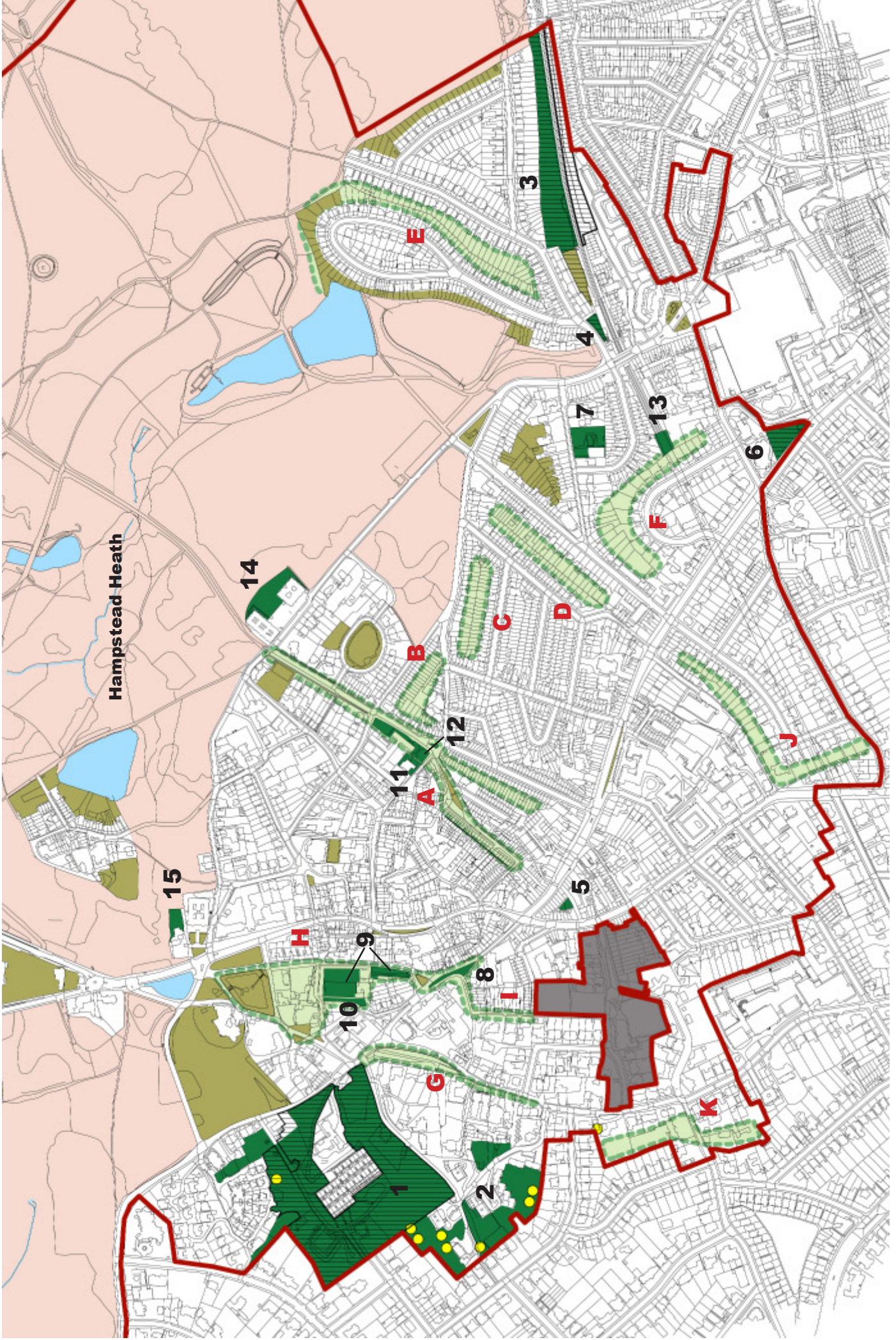
(Draft) Hampstead

Neighbourhood Plan

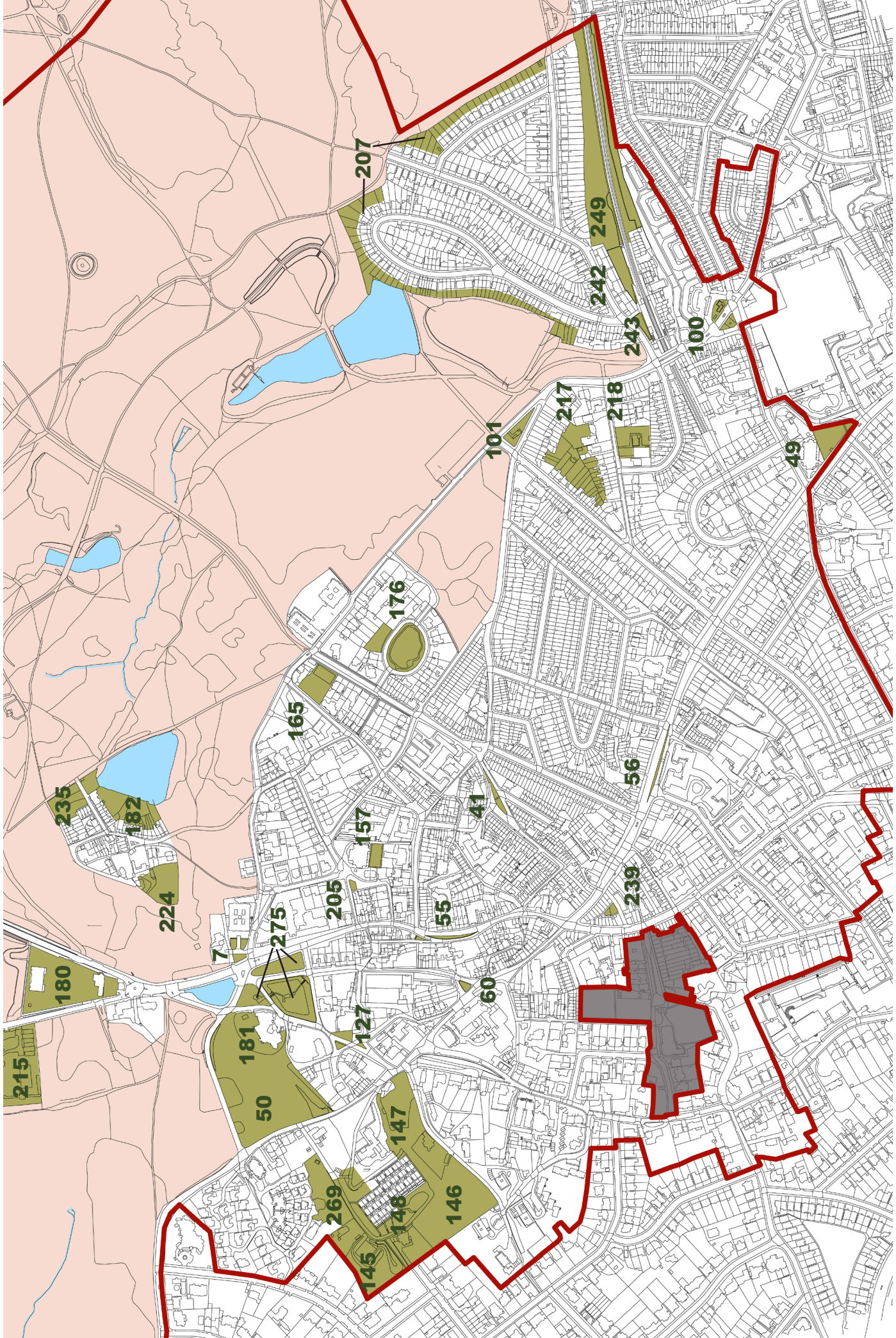
2017-2032

This section illustrates the key open spaces referred to in the Natural Environment section of the Neighbourhood Plan. These maps should be read in conjunction with **the table** at the end of this section and highlights the following types of spaces:

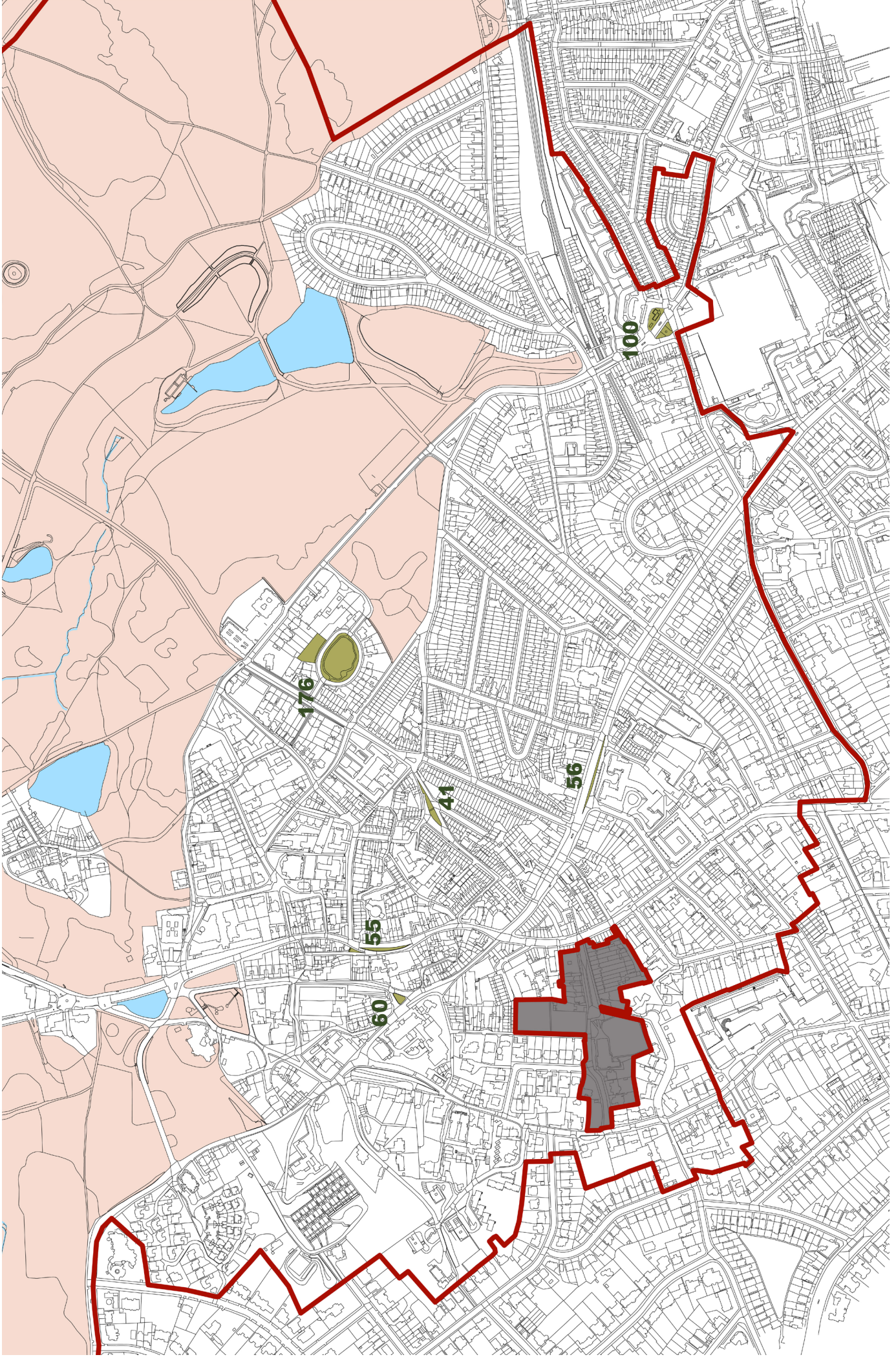
1. Hampstead Heath
2. Local Green Spaces (proposed)
3. Spaces with London Squares Preservation Act 1931 designation (existing)
4. Spaces with Camden UDP Private / Public Open Space designation (existing)
5. Sites of Importance for Nature Conservation



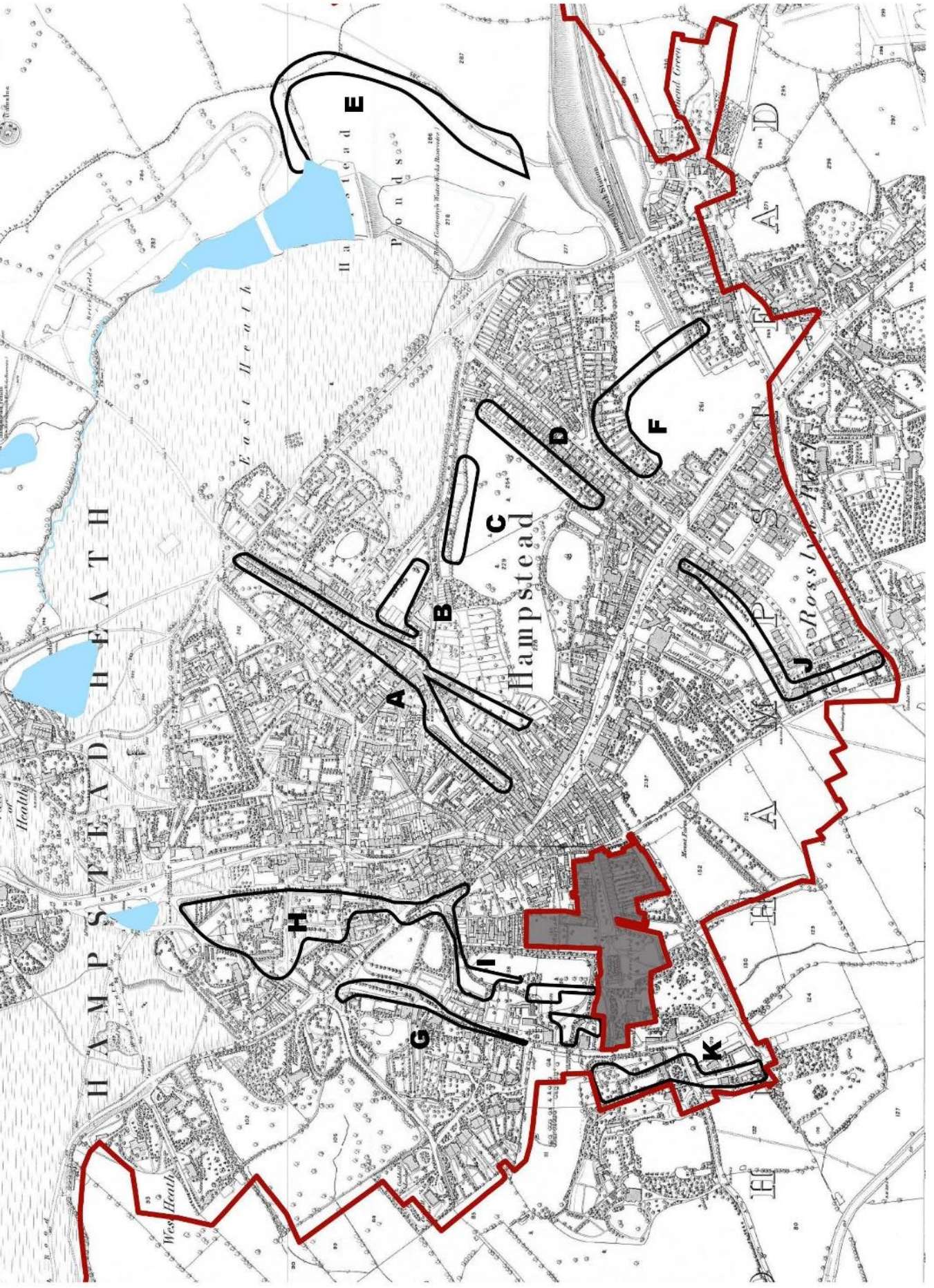
Map 5: Open Space and Biodiversity Corridors Map



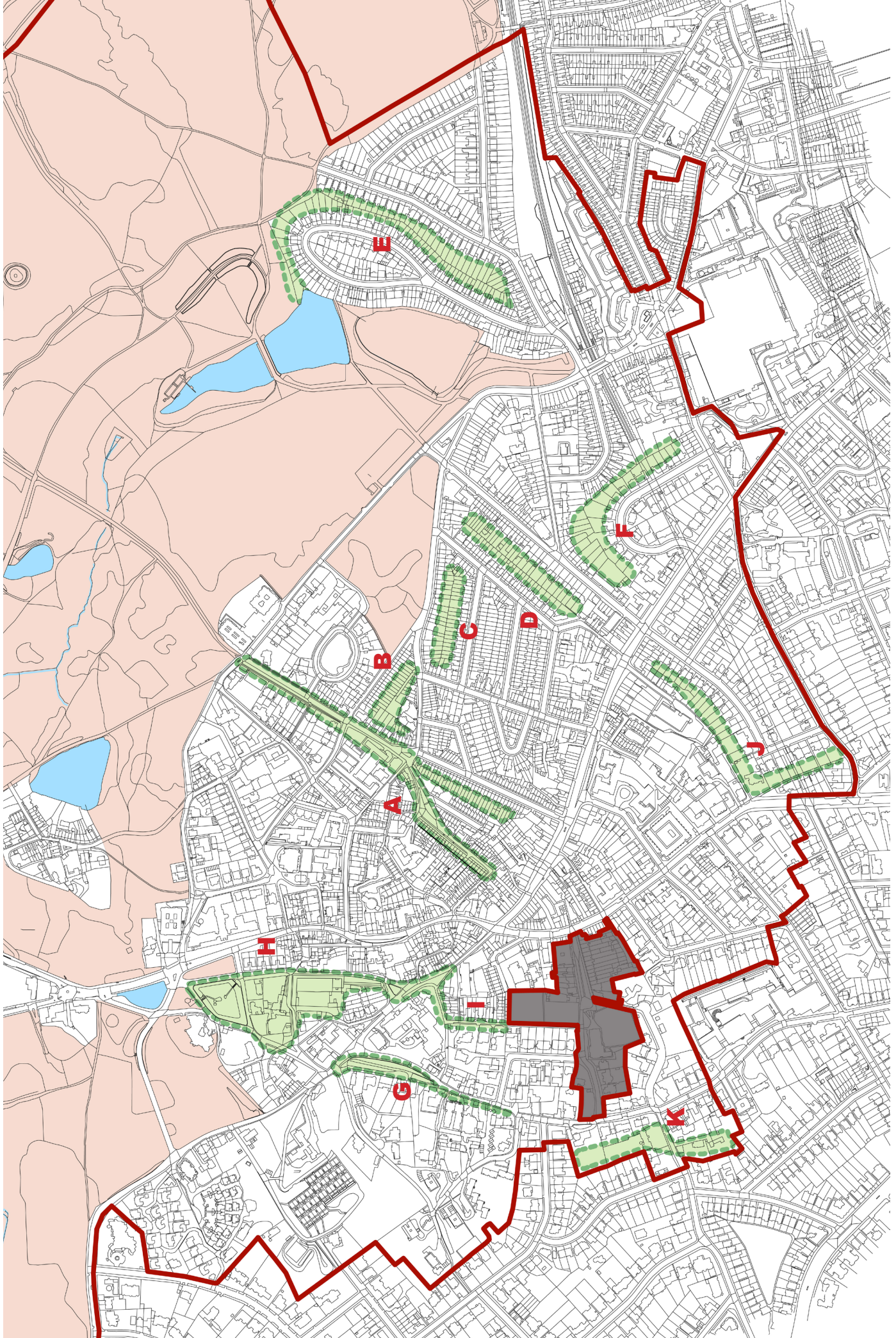
Camden UDP Open Spaces Key Map



London Preservation Squares Open Spaces Key Map

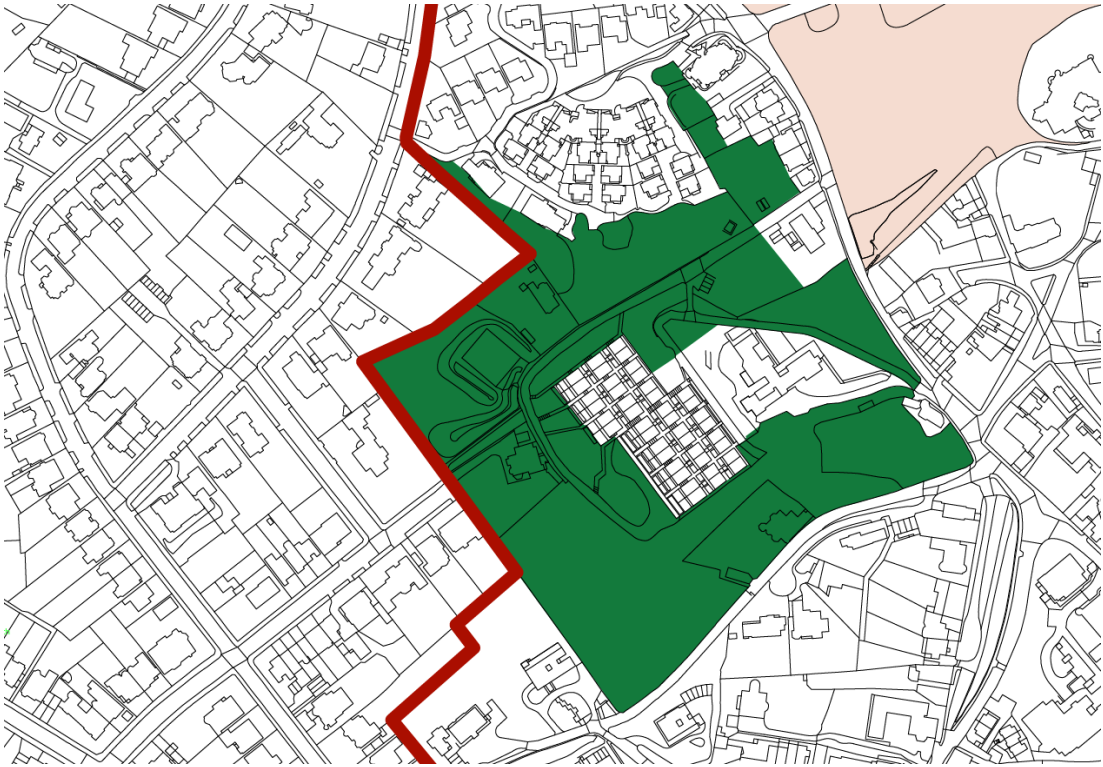


Biodiversity Corridors Superimposed on the 1866 Map



Biodiversity Corridors

Local Green Spaces Detailed Maps



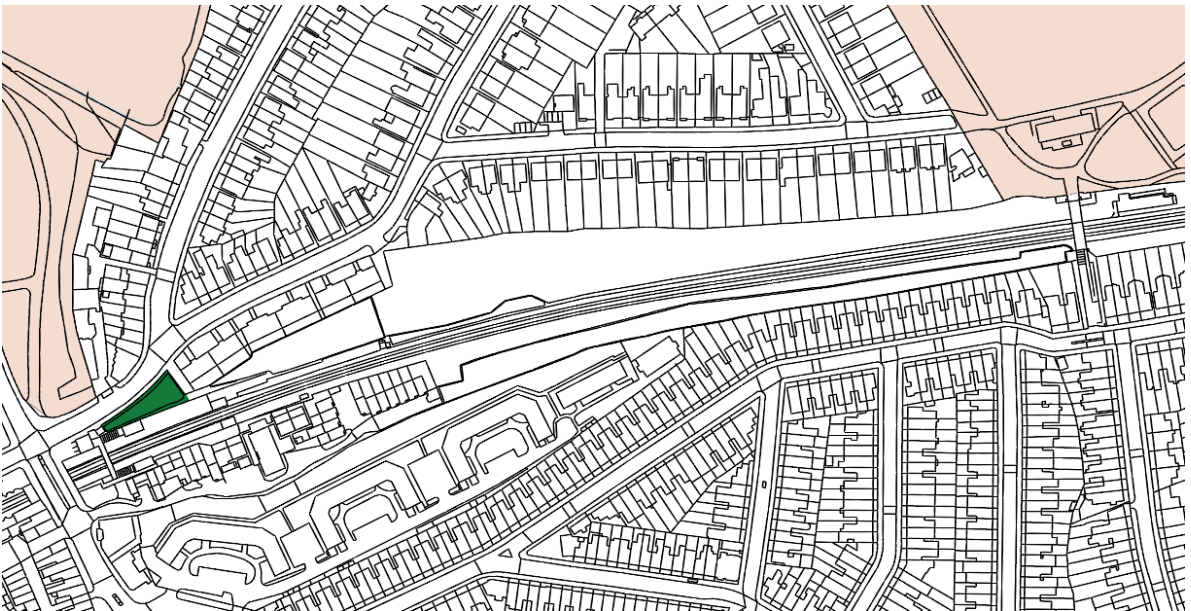
1. Branch Hill House Gardens; Branch Hill Wood; Branch Hill Allotments



2. Oak Hill Wood



3. South End Green and Mansfield (SEGMA) Allotments



4. World Peace Garden, South Hill Park



5. Oriel Place Garden



6. Hampstead Green



7. Keats House and Garden



8. Holly Hill Bank



9. Fenton House Gardens



10. Pedestrian Walk – Admirals Walk to Windmill Hill



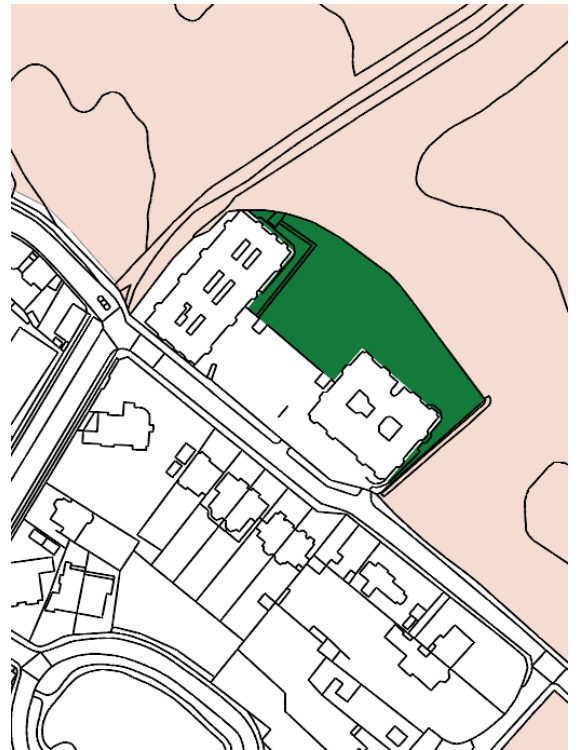
11. Burgh House Gardens



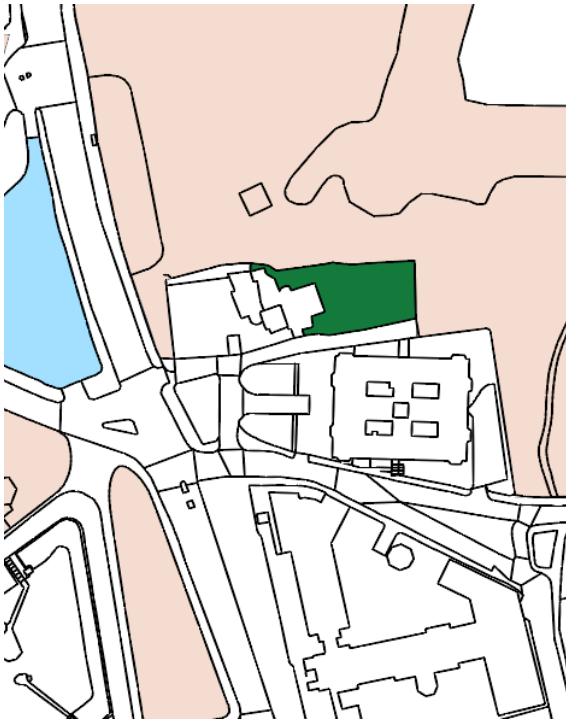
12. Communal Gardens of Wells House and Gertrude Jekyll's Garden



13. Heath Hurst Gardens



14. Garden of The Pryors



15. Whitestone House Gardens