

# CAMDEN AND ISLINGTON ESOL ADVICE SERVICE ESOL ACTIVITIES

Monday 14 December 2020

## Shopping and Presents

### Pre-entry to Entry 1

#### Gift Wrapping Words



For Pre-Entry to Entry 1 Learners

#### Christmas Words Words



For Entry 1 Learners

### Entry 1 to Entry 2

#### A Birthday Present Listening



For Entry 1 to Entry 2 Learners

#### A Magical Present Listening



For Entry 1 to Entry 2 Learners

CAMDEN  
020 7974 1618  
[esol@camden.gov.uk](mailto:esol@camden.gov.uk)  
[www.camden.gov.uk/esol](http://www.camden.gov.uk/esol)



ISLINGTON  
020 7974 1930  
[esol@islington.gov.uk](mailto:esol@islington.gov.uk)  
[www.islington.gov.uk/esol](http://www.islington.gov.uk/esol)

# CAMDEN AND ISLINGTON ESOL ADVICE SERVICE ESOL ACTIVITIES

Monday 14 December 2020

## Entry 2 to Entry 3

### Mr Bean: Shopping

Listening



For Entry 2 to Entry 3 Learners

### 12 Days of Christmas

Listening



For Entry 2 to Entry 3 Learners

## Entry 3 to Level 1

### Christmas Shopping

Read and Listen



For Entry 3 to Level 1 Learners

### The Greatest Gift

Listening



For Entry 3 to Level 1 Learners

CAMDEN  
020 7974 1618  
[esol@camden.gov.uk](mailto:esol@camden.gov.uk)  
[www.camden.gov.uk/esol](http://www.camden.gov.uk/esol)



ISLINGTON  
020 7974 1930  
[esol@islington.gov.uk](mailto:esol@islington.gov.uk)  
[www.islington.gov.uk/esol](http://www.islington.gov.uk/esol)



Supported by  
 ISLINGTON

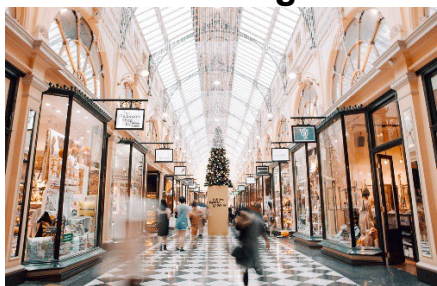
# CAMDEN AND ISLINGTON ESOL ADVICE SERVICE ESOL ACTIVITIES

Monday 14 December 2020

## Level 1 to Level 2

### Commercial Christmas

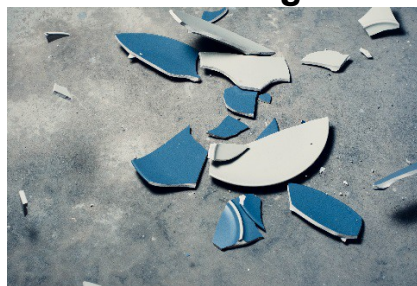
Reading



For Level 1 to Level 2 Learners

### The Worst Present

Listening



For Level 1 to Level 2 Learners

## Useful links

### Health

**GP appointments and bookings**

**NHS Flu vaccine**

**NHS: 10-minute Workouts**

**Free Emergency Dentist:** Arrive at 6:30am, no appointment needed

**Mental Health Helpline – Open 24 hours a day**

### Help and information

**Camden Cost of Living Support**

**Islington Cost of Living Support**

**Camden Digital Library:** Free eBooks and eAudio

**Islington Borrow Box:** Free eBooks and eAudio

**Citizens Advice - Housing**

**Find your local council:** Get help and information

**Free Legal Help:** For families with Children

**Barnet Refugee Service:** For Asylum Seekers and Refugees

**London Asylum Crisis Project:** For Asylum Seekers and Refugees

**Go to the next page for links to public services in Camden and Islington**

CAMDEN  
020 7974 1618  
[esol@camden.gov.uk](mailto:esol@camden.gov.uk)  
[www.camden.gov.uk/esol](http://www.camden.gov.uk/esol)



ISLINGTON  
020 7974 1930  
[esol@islington.gov.uk](mailto:esol@islington.gov.uk)  
[www.islington.gov.uk/esol](http://www.islington.gov.uk/esol)

# CAMDEN AND ISLINGTON ESOL ADVICE SERVICE ESOL ACTIVITIES

Monday 14 December 2020

## CAMDEN

### Camden Council

- **Benefits and support**
- **Children, Families and Young People**
- **Education**
- **Crime and Safety**
- **Housing**
- **Coronavirus**

**Camden libraries**

**Camden Early Help**

**Camden Employment Support**

**Citizens Advice**

**Using a food bank**

**Independent food banks: Urban Community Projects / The Pantry / Queens Crescent**

---

## ISLINGTON

### Islington - Advice

- **Free, independent advice on debt, benefits and housing**
- **Get help to manage your money**
- **Finding a home / Homelessness**
- **Resident support scheme**
- **Assistance for refugees and migrants**
- **Consumer advice – Protect yourself against scams**

**Islington libraries**

**Islington Family Information Service**

**Islington Employment Support (iWork)**

**Help on your doorstep**

**Citizens Advice**

**Using a food bank**

**Independent food banks: Ringcross Community / The Arc Centre / The Hive Foodbank**

CAMDEN

020 7974 1618

[esol@camden.gov.uk](mailto:esol@camden.gov.uk)

[www.camden.gov.uk/esol](http://www.camden.gov.uk/esol)



ISLINGTON

020 7974 1930

[esol@islington.gov.uk](mailto:esol@islington.gov.uk)

[www.islington.gov.uk/esol](http://www.islington.gov.uk/esol)

Supported by

