

# Maitland Park Estate

Issue 08 –May 2021

Dear Residents

Thank you for your understanding and patience during the ongoing works at Maitland Park Estate. We hope that you are keeping safe and well.

We have just completed the 2<sup>nd</sup> month of the main works programme. Over the next four weeks we will be carrying out the following works:

- **Piling works will be continuing and aim to be completed on both the Aspen and Grafton sites**
- **Tower crane erection at Aspen site expected on 18<sup>th</sup> and 19<sup>th</sup> May**  
Setting up the crane may require continuing work outside of our normal working hours (on the 18<sup>th</sup> and 19<sup>th</sup>), for which permission will be requested from Camden Council's Planning Department.  
During this time residents can expect increased vehicular movement whilst the crane is being installed and the mobile crane is delivered. There will not be a need for any road closures, but traffic will be closely managed.
- **Installation of concrete slab foundations for the new blocks on Aspen and Grafton Terrace sites**  
- Once the piled foundations have been completed, a concrete slab foundation will be formed by pouring concrete directly onto the ground. These works will result in additional concrete deliveries and muck away trucks to and from the site.
- **Drainage installation at Aspen site, Grafton Terrace and Grafton House** - These works will result in additional deliveries and muck away trucks to and from the site.
- **Construction of concrete frame** – Once the tower crane has been erected, we will be commencing the concrete frame works, starting at our Aspen Villa block. This will result in concrete deliveries and muck away trucks to and from the site.



**External works** | G.NETWORK is responsible for the Fibre Broadband Network expansion works (being carried out across London) that their contractor, ReachActive, is completing along Maitland Park Villas that started on 28<sup>th</sup> April. *Bouygues UK does not have any participation or responsibility on this work. We are, however, liaising with their team to try to minimise disruption on the estate where possible.* If you have any queries or concerns about this work, please contact Camden Council (details below) or G. Network on 0800 033 4003.

**Note that** | We have been made aware that a member of Bouygues' team was verbally abused by a member of the public. Camden Council will not tolerate acts of verbal or physical abuse towards its staff or those who are commissioned to undertake work on behalf of the Council. Should you want to raise any issues or concern please contact us (details overleaf).

**For more information** | Please look at noticeboards on our site hoardings. To join the **Construction Working Group** contact: [Rebecca.Ellis@camden.gov.uk](mailto:Rebecca.Ellis@camden.gov.uk), or call: 020 7974 3878 or visit [www.camden.gov.uk/maitland-park](http://www.camden.gov.uk/maitland-park)

**Jobs, apprenticeships and scholarships available for Camden residents.** If you are interested in: **Construction related jobs or apprenticeships** please visit: <https://construction.camden.gov.uk/> **Non- construction apprenticeships** visit: [www.camden.gov.uk/apprenticeships](http://www.camden.gov.uk/apprenticeships), email: [apprenticeships@camden.gov.uk](mailto:apprenticeships@camden.gov.uk) or call 02079748778 **Scholarships** with HULT Business School (deadline 21 May 2021) and with Birkbeck (deadline 18 June 2021): <https://www.camden.gov.uk/scholarships#udft>



Shared innovation

[www.bouygues-uk.com](http://www.bouygues-uk.com)

# Your safety is our concern

Bouygues UK takes every precaution to keep you safe throughout the construction process.

At all times, our site will be secure and surrounded by fencing but building sites can be hazardous places:

- We dig deep holes
- We erect scaffolding
- We use large, noisy machinery

**Please do not enter the construction site, unless it is part of a pre-arranged visit by our project team.**

- Our operatives and staff are trained to work safely

Please help us to keep you and children safe, and take extra care during the school holidays.



**HEALTH  
& SAFETY  
A SHARED  
COMMITMENT!**

## Considerate Constructors Scheme

Bouygues UK firmly supports the aims of the Considerate Constructors Scheme. All of our sites are registered with the Scheme, and regular visits from the Considerate Constructors monitor will help us to ensure that we continue to improve our performance in showing full respect for:

- Appearance
- Community
- Environment
- Safety
- Workforce

Please let us know if you have any concerns.

Our contact details are on the newsletter that you should regularly receive or on the site hoardings.

If you would like further information regarding the Scheme you can visit their website at [www.ccscheme.org.uk](http://www.ccscheme.org.uk)



### Standard site working hours are:

Monday to Friday: 8am-6pm  
Saturday (if needed): 8am-1pm  
There should be no noisy works before 8am.

### Want to speak to us?

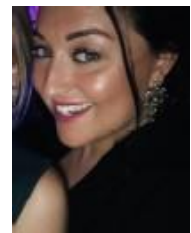
We understand you will want to know what is happening in your area. Our team is available to answer any queries or concerns you may have and are only too pleased to hear from you. If you have any community projects that you think Bouygues UK could get involved with, please contact the site team below.

### Your contacts



Left: Mark Crisp, Site Manager  
Email: [mark.crisp@bouygues-uk.com](mailto:mark.crisp@bouygues-uk.com)

Right: Amanda Harrison, Resident Liaison  
Email: [amanda.harrison@bouygues-uk.com](mailto:amanda.harrison@bouygues-uk.com)  
Phone 24/7: 0800 083 0003



**Shared innovation**

[www.bouygues-uk.com](http://www.bouygues-uk.com)